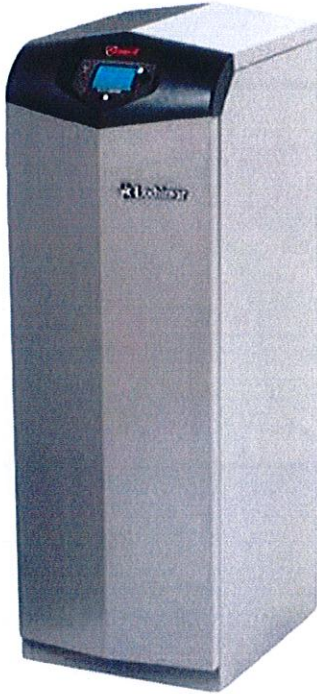


APPENDIX C

Lochinvar Knight XL KBN400 324000 BTU High Efficiency Natural Gas Boiler



SKU: 102761

\$7,888.09/ea CARGO SHIPPING ONLY

Save 29% • Retail: \$11,071.00

⚠ Available to Ship in 2-3 weeks

About the Lochinvar KBN400

Lochinvar Knight XL KBN400 324000 BTU High Efficiency Natural Gas Boiler. The Lochinvar Knight XL Series Boilers are the smartest choice for a condensing performance boilers. Engineered with Lochinvar's exclusive SMART SYSTEM Control (LCD Display Screen, and the ability to control up to three temperature set-points) and a vast variety of other innovative features. Knight Boilers promise to deliver ease of installation and maintenance. With up to 94.6% efficiency, low emissions and a fully modulating burner, these are the best Green Choice for today's conscious market. All boilers are equipped for direct-vent installation with air intake and exhaust runs up to 100 feet. This range of choices is ideal for residential or light-duty applications such as small hotels, schools and office buildings. Included with Lochinvar's Knight XL Boiler Series, is a 399,000-800,000 BTU/hr, and a fully modulating burner with 5:1 turndown. You can find optional equipment kits for your Knight Boilers also.

Product Details

Product:	Boiler
Manufacturer:	Lochinvar
Type:	Pump Relay
Fuel Type:	Natural Gas
Other Info:	Password Securable
Mpn #	KBN400
Dimensions	27 " X 16 " X 43 "
Weight	285 lbs.

Product Features

- Modulating Burner With 5:1 Turndown
- Low Gas Pressure Operation
- Zero Clearances to Combustibles
- Easy Access Terminal Strip
- Natural to LP Conversion Kit
- Inlet & Outlet Temperature Sensors
- Low Water Flow Indication
- Domestic Hot Water Prioritization
- Adjustable Leveling Legs



- Sidewall Vent Terminals
- On/Off Switch
- ASME Stainless Steel Heat Exchanger
- Contact On Any Failure
- SMART SYSTEM Digital Operating Control
- 2 line, 16 Character LCD Display
- Password Security
- Built In Cascading Sequencer
- Building Management System Control
- 0-10 VDC Input Control
- Outdoor Reset
- Night Setback
- Three Pump Control (System, Boiler & DHW)
- Direct-Vent Sealed Combustion
- Pump Relay With Freeze Protection
- Product Service Indicator
- Field Connection Versatility
- Optional PC Or Pocket PC Software
- Floor Standing
- Gallon Capacity: 3.4
- Heating Surface (Sq.Ft.): 41.8
- Water Connections: 1-1/2"
- Drain: 3/4"
- Max Working Pressure: 160 psi
- 50 psi Relief Valve
- Number of Relief Valves: 1
- Relief Valve Size: 3/4"
- Relief Valve Pressure Rating: 50 psi
- Gas Inlet Connection: 1"
- BTU/Hr Input: 399,000
- BTU/Hr Output (High Fire): 372,267
- BTU/Hr Output (Low Fire): 74,453
- Voltage/Heater: 120 V
- Voltage/Control: 24 V
- Total Amps: 1.5 A
- Adjustable High Limit With Manual Reset
- Number of Electrical Connections: 1



- Dimensions (H x W x D): 42-1/2" x 15-1/2" x 27"
- Vent Size: 4"
- Vent Category: IV
- Vent Material: PVC
- Shipping Weight: 285 lb
- Flow Switch
- Temperature & Pressure Gauge
- Direct-Spark Ignition
- Low NOx Operation

Reviews



Be the first to review this product

[Policies](#)

[Customer Service](#)

[My Account](#)

[PlumbersStock](#)

[Newsletter Sign-up](#)

