



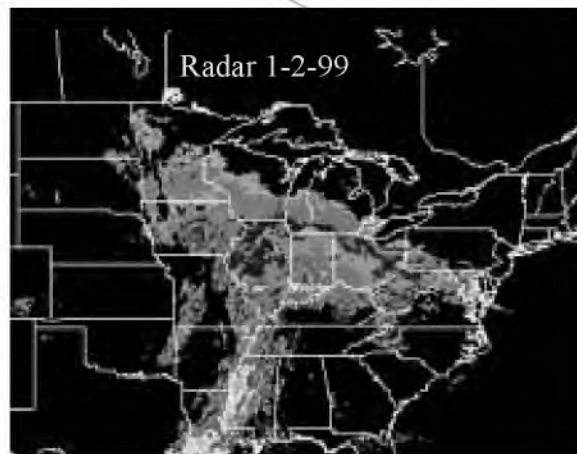
# INDOT Total Storm Management Manual

88<sup>th</sup> Annual Road School

Bob McCullouch



## What is your reaction?



Oh #/\*#\*\!!

## Proactive/Reactive Approach



## Accomplishments

- Committee members:
  - Dennis Belter
  - Krystal Cornett
  - Rusty Fowler (Chair)
  - Jason Jones
  - Tom Konieczny
  - Tony McClellan
  - Bob McCullouch
  - Beth Ritzert(Purdue Student)
- Year long effort
- Draft version available
  - [www.purdue.edu/JTRP](http://www.purdue.edu/JTRP) @ menu bottom
- Version 1.0 – Summer 2002



# Development

- Modeled after “Guide for Snow and Ice Control,” AASHTO publication.
- Contributors:
  - Ron Buell
  - Mark Burton
  - Randy Collins
  - John Curran
  - Rachel Dryden
  - Thomas L. Duncan P.E.
  - Fred James
  - Chuck Neuenschwander
  - Doug Terry



# Topics

- |  |                             |
|--|-----------------------------|
| Administration & Management                                      | Environmental Issues        |
| Personnel Issues   | Equipment                   |
| Snow and Ice Control Materials                                   | Weather Information Systems |
| Storm Operations   | Special Considerations      |
| Appendix – Operating procedures, forms, checklists, reports, FAQ |                             |

## Purpose

The purpose of this manual is to provide a resource that provides answers and options in the effort to keep Indiana Highways open and safe during the winter season.

Future Updates will incorporate latest methods, chemicals, policies, and equipment.

## QUESTIONS?

