

February 2008

## Letters to the Editor

Katina Strauch

*Against the Grain*, [kstrauch@comcast.net](mailto:kstrauch@comcast.net)

Follow this and additional works at: <https://docs.lib.purdue.edu/atg>



Part of the [Library and Information Science Commons](#)

---

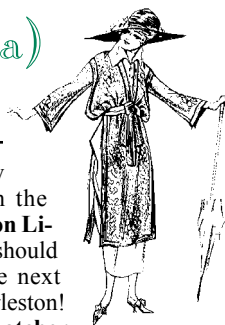
### Recommended Citation

Strauch, Katina (2008) "Letters to the Editor," *Against the Grain*: Vol. 20: Iss. 1, Article 2.

DOI: <https://doi.org/10.7771/2380-176X.2684>

This document has been made available through Purdue e-Pubs, a service of the Purdue University Libraries. Please contact [epubs@purdue.edu](mailto:epubs@purdue.edu) for additional information.

# From Your (playing the yiayia) Editor:



Greek lesson — the word for grandmother is **Yiayia**. And this Yiayia is heading off for the christening of her very first grandchild, a little boy named **Trifon Raymond Walsler**. **Trifon** was my daughter-in-law's great grandfather's name and is also the Christian god of wine, I learned recently from a niece who knows all these things.

And back at the **ATG** ranch, we are working away on the February issue. Sorry for the delay in getting this issue out but, hey, it's well worth the wait. **Margaret Landesman** has put together some really cool articles about **public library initiatives** by **John Ober**, **Samantha Larsen Hastings**, **Anne Carr-Wiggin** and **Louise Reimer**, **Marie Paiva**, **Lisa German**, **Sue Medina**, **Barbara G. Preece**, and **Sally Patrick**. We also have some special reports on diverse subjects like **academic libraries after print**, **implementing eBook collections**, **using rare books**, and **Wikis** in the workplace from **Allen McKiel**, **Cynthia Cleto**, **Gene Waddell**, **Keith Engwall** and **Steve McKinzie**. We have a fascinating interview with **Dr. Eric Emerson**

about one of the few **private libraries** in the world, **The Charleston Library Society**. You should be sure and visit the next time you are in Charleston! What else? **Sandy Thatcher** gives us **Part II** of **How to Establish a Research Agenda for Scholarly Communication**. **Dr. Matthew Bruccoli** commemorates the **DLB at Thirty**, **Todd Carpenter** talks about **institutional identification**, **Cris Ferguson** takes on **Zotero**, and I could go on and on. Oh! And we have the return of two of our old (not in the aging sense) columnists — **Philip Hallman** who returns to the **Media Minder** column and **Jared Seay** to **You Gotta Go to School for That**. Welcome!

I have to say *adio sas* (Greek for goodbye to y'all) for a few days as I head off to San Antonio for the christening. But first I have to order some children's books for **Trifon**. You can't start reading too early!

Love to all. Yr. Ed. 🐾



**Rumors**  
from page 1

**Appalachian State University** (Boone, NC), Departmental teams are being renamed and a reshuffling of library faculty and staff is in the works. Of particular interest to **ATG** readers — **John Abbott** is the **Coordinator of the Collection Management Services Team**. In Bibliographic Services (the old Technical Services) — **Georgie Donovan** is now **Lead Acquisitions Librarian** and Acquisitions will include **ILL borrowing & document delivery**. **Paul Orkiszewski**, formerly Coordinator of Acquisitions & Cataloging, is returning from a six-month stint at the **University of Sydney's Music Conservatory** to become **Coordinator of the Bib Services Team**. **Eleanor Cook**, formerly Serials Coordinator, is joining a newly formed team "Web Services" as **Intellectual Property & Copyright Librarian**. **Kevin Clarke**, heading up **Web Services**, is **Digital Initiatives Librarian**. **Marilia Antunez**, a new hire from **Michigan State**, is **Allied Health & Science Librarian**; **Susan Golden** has retired. **Ken Johnson** is Coordinator of the **Learning & Research Services Team**, **Allan Scherlen** is **Social Sciences Librarian**. Whew! That's a lot to assimilate!

Was recently in Atlanta where the **Institute of Museum and Library Services Connecting to Collections Preserving America's Diverse Heritage** was held January 31 and February 1, 2008 at the **High Museum of Art and Woodruff Arts Center**. **Lonnie Bunch**, Director of the **Smithsonian's National Museum of African American History and Culture**, was a standing-ovation keynote speaker. **Lonnie** spoke about museums and libraries and how they preserved the soul of the country. **Sven Haakanson**, **Executive Director of the Alutiq Museum** in Kodiak, Alaska and recent recipient of a **MacArthur Foundation Fellowship**, **Loretta Parham**, **Director of the Woodruff Library of the Atlanta University Center**, and **Susana Leval**, **Director Emeritus of El Museo del Barrio**, provided an overview of the rich collections held by diverse institutions. Other experts included nationally recognized photograph conservator **Debra Hess Norris** of the **University of Delaware/Winterthur** and **Alan Lewis**, who has advised both the **Library of Congress** and the **National Archives** on preservation of audio-visual materials. And this was just one of several such seminars planned throughout 2008 and 2009 by **IMLS**. **Connecting to Collections: A Call to Action** is a multi-year, multi-faceted national initiative to raise public awareness and inspire action. The initiative is grounded in the results of **A Public Trust at Risk: The Heritage Health Index Report on the State of America's Collections**. The Webcast of **Preserving America's Diverse Heritage** is available at [http://www.tvworldwide.com/events/heritage\\_preservation/080131](http://www.tvworldwide.com/events/heritage_preservation/080131).

[www.ims.gov/collections/](http://www.ims.gov/collections/)  
<http://www.ims.gov/collections/Tour/atlanta.htm>

continued on page 8

## Letters to the Editor

Send letters to <kstrauch@comcast.net>, phone or fax 843-723-3536, or snail mail: **Against the Grain**, MSC 98, The Citadel, Charleston, SC 29409. You can also send a letter to the editor from the **ATG Homepage** at <http://www.against-the-grain.com>.

### Dear Editor:

Just a brief note to let you now how much I appreciate, as a retiree, receiving **Against the Grain**. It brings back such wonderful memories of the years I attended the **Charleston Conference**. I believe the first one was in the late 1980's, and there could not have been more than 75 in attendance. It sure has grown over the years! I certainly looked forward to coming back every year, to catch up with what was happening in other libraries. This was such

a stimulating group and, even though it really grew in size, there was still ample opportunity to learn from, and exchange information with, colleagues. I always made it clear to my former "fellow librarians" at **Cornell** that this was the conference to attend no matter what your particular speciality was within the library profession.

One of these days I really want to get back to Charleston, one of my favorite cities.

Warmest regards, **Phil Dankert**

<pdankert@twcny.rr.com> 🐾

## AGAINST THE GRAIN DEADLINES VOLUME 20 — 2008-2009

2008 Events	Issue	Ad Reservation	Camera-Ready
MLA, Book Expo	April 2008	02/20/08	03/05/08
SLA, ALA Annual	June 2008	04/16/08	04/30/08
Reference Publishing	September 2008	07/16/08	07/30/08
Charleston Conference	November 2008	09/03/08	09/17/08
ALA Midwinter	Dec. 08/Jan. 09	10/29/08	11/19/08

### FOR MORE INFORMATION CONTACT

**Toni Nix** <justwrite@lowcountry.com>; Phone: 843-835-8604; Fax: 843-835-5892 or  
**Edna Laughrey** <elaughrey@aol.com>; Phone: 734-429-1029; Fax: 734-429-1711  
Address: 291 Tower Drive, Saline, MI 48176. 🐾