



I-465 Northwest Fast Track

Context Sensitive Solutions



Introduction

- CSS Team Introduction
 - Mark Zwoyer, Project Manager--R.W. Armstrong
 - Kevin D. Russell, Architectural Consultant--A2SO4 Architecture
 - Jonathan Mooney, Landscape Architecture Consultant—Green 3

Introduction

- Project Synopsis
 - Three miles between I-65 interchange & 86th street
 - Reconstructs I-465 to six lanes in each direction
 - Includes loop ramps in NW quadrants of 71st and 86th Streets & a direct slip ramp in the NE quadrant of 71st.
 - Replacement of 79th street bridge



Introduction

- Design began in late 2003
- Construction began in 2004
- Current contract reconstructs I-465 mainline and loop ramp bridges over 71st & 86th Streets
- In 2006 interchanges will be reconstructed
- Estimated project cost: \$88 million

What Is CSS?

- CSS is a collaborative approach to developing and designing transportation facilities that fit into their physical and human environment while preserving the aesthetic, historic, community and environmental values.
- Context Sensitive Solutions involve the balancing of safety, mobility economics and community values within a public transportation project.



CSS Process

- CSS will be different for every project, but the process will remain the same:
 - Identify the issues
 - INDOT concurrence identifies CSS Targets
 - Design to address the CSS Design Targets
 - Present design options to INDOT for concurrence/selection of option
 - Inform public of direction and continue to process the information

Information Gathering

- Early Coordination for the Environmental Assessment included the following:
 - Normandy Farms Homeowner Association
 - Traders Point Civic Association
 - Traders Point Residents Association
 - Friends of Fishback Creek
 - Georgetown Crossing Homeowners Association
 - Lakeside Woods Homeowner Association
 - Fred Ropkey of 79th Street
 - Indy Parks
- Preparations Included:
 - Letters to public agencies
 - Aerial map

Information Gathering

- A formal Public Meeting included the following additional groups:
 - Dow Agro Chemical
 - Eastern Star Church
 - Northwest Radiology
 - Pike Township Residents Association
 - Traders Point North Neighborhood Association
 - Eagle Creek Woods Homeowner Association
 - Dixon Management (Wendy's)
 - Schahet Hotels (Courtyard, Hampton Inn, Residence Inn)
 - Wingate Inn
 - Golden Rule Insurance
 - Video Images
 - Gordon Acres Association
- Preparation Included:
 - Aerial photos
 - Traditional plans
 - Imagery of what CSS can be
 - Video/photomontage

Information Gathering

- Informal meetings were held with the following groups and individuals to solicit perceived problems & issues:
 - Duke Realty
 - Lauth Properties
 - CB Richard Ellis,
 - Kite Development
 - West 86th St. Neighborhood
 - Attorney Joe Hammes
 - Chestnut Hills Neighborhood
 - OrthoIndy
- Galyans
- Homestead Suites
- Indy Parks
- Preparation Included:
 - Aerial photos
 - Traditional plans
 - Imagery of what CSS can be
 - Video/photomontage



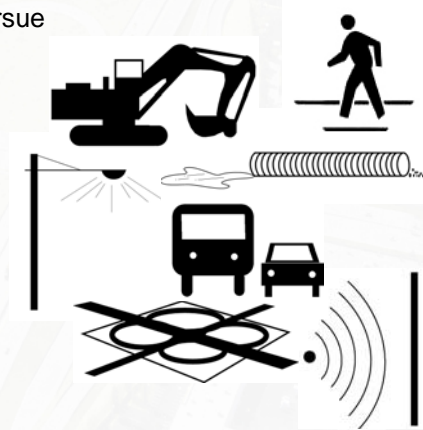
Community Values

- CSS Issues Raised
 - Construction Noise Pollution
 - Light Pollution
 - Drainage
 - Reliability of Mobility
 - Reliability of Access
 - Size of Construction Footprint
 - Visibility
 - Aesthetics
 - Pedestrian Mobility
 - Duration of Construction
 - Property Values
 - Information Sharing

CSS Design Targets

- CSS Design Targets To Pursue

- Lighting
- Drainage
- Mobility
- Access
- Land Use
- Pedestrian Mobility
- Visibility
- Construction Activity
- Maintenance Of Traffic
- Sound Barrier
- Aesthetics



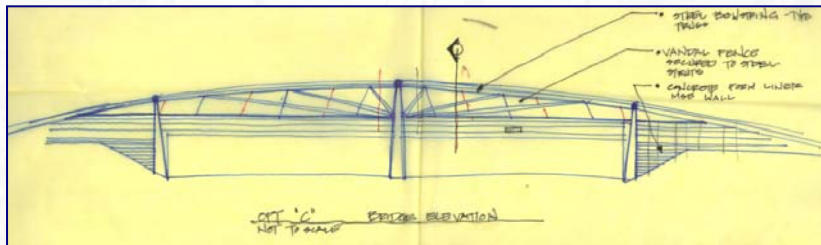
Preliminary Design

- Contextual Inventory of the Corridor



Preliminary Design

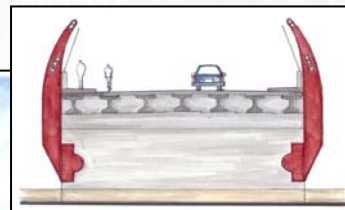
- 79th Street Concept Development as a result of partnering
- Integrating CSS treatments into engineered solution



Road School March 30, 2005 -- Page 13

I-465 Fast Track Context Sensitive Solutions

Preliminary Design

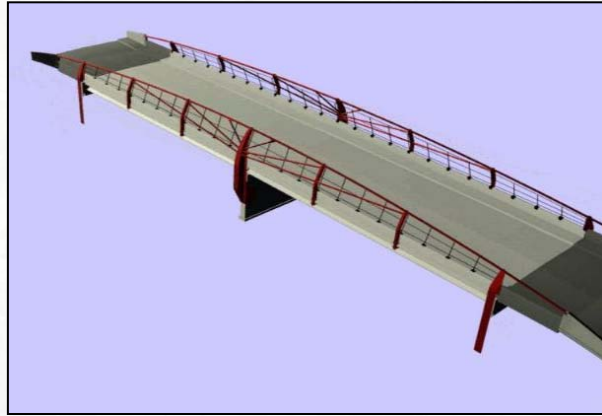


79th Street

Road School March 30, 2005 -- Page 14

I-465 Fast Track Context Sensitive Solutions

79th Street Bridge

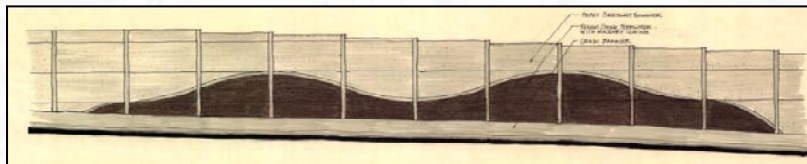


Road School March 30, 2005 -- Page 15

I-465 Fast Track Context Sensitive Solutions

Design Solutions

- Sound Barrier
 - Reviewed design options to maximize tree buffer on ROW
 - Landscape architecture treatments & mitigation
 - Architectural treatments through texture, pattern & color



Proposed Sound Barrier

Road School March 30, 2005 -- Page 16

I-465 Fast Track Context Sensitive Solutions

Design Solutions

- Lighting
 - Provided low level lighting in quadrants with residential stakeholders
 - Provided low level lighting on slip ramp feeding adjacent business park development

- Drainage
 - Resolved drainage as it pertains to the West 86th Street Neighborhood

Design Solutions

- Land Use
 - INDOT ROW and existing tree buffer at 86th street



Before



After

Design Solutions

■ Visibility

- Design tries to preserve sight lines associated with adjacent commercial stakeholders

■ Construction Activities

- Informed stakeholders regarding peak times of anticipated noise level/vibration
- Informed stakeholders regarding construction schedule

Construction Information



Design Solutions

■ Access & Mobility

- Slip Ramp and Park 100
- Loop Ramps
- Neighborhood Access



Road School March 30, 2005 -- Page 21

I-465 Fast Track Context Sensitive Solutions

Design Solutions

■ Pedestrian Mobility

- Circulation through the interchanges via paths & tunnels
- Bike lanes & sidewalks at 79th Street
- Connecting & coordinating with Eagle Creek & Indy Parks



Road School March 30, 2005 -- Page 22

I-465 Fast Track Context Sensitive Solutions

Design Solutions

- Partnering Opportunities
 - Financial
 - Maintenance Agreements
 - Adopt A Median
- Current Partners
 - DPW
 - Indy Parks
 - Keep Indianapolis Beautiful



Design Solutions

- Round One Concept Development



**71st & 86th Street
Option One**



**71st & 86th Street
Option Two**

Design Solutions

- INDOT response:

Well done, but try again -- we like:

- *The strong arch associated with 79th street*
- *Formliner patterns*

Design Solutions

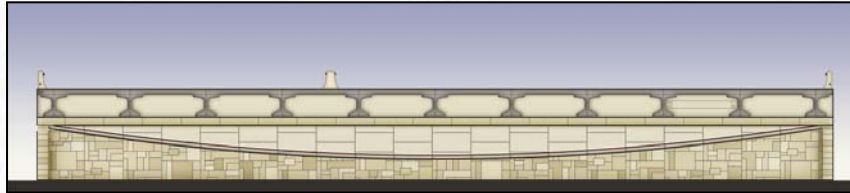
- Round Two Concept Development



71st & 86th Street Elevation

Design Solutions

- Round Two Concept Development



71st & 86th Abutment & Accent Lighting

Road School March 30, 2005 -- Page 27

I-465 Fast Track Context Sensitive Solutions

Design Solutions

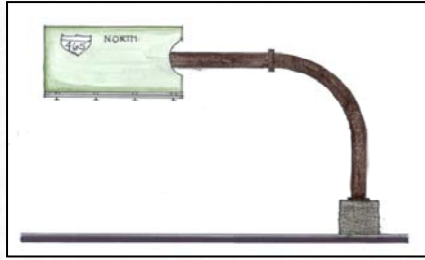


71st & 86th Street Rendering

Road School March 30, 2005 -- Page 28

I-465 Fast Track Context Sensitive Solutions

Design Solutions



Monotube Signage & Base

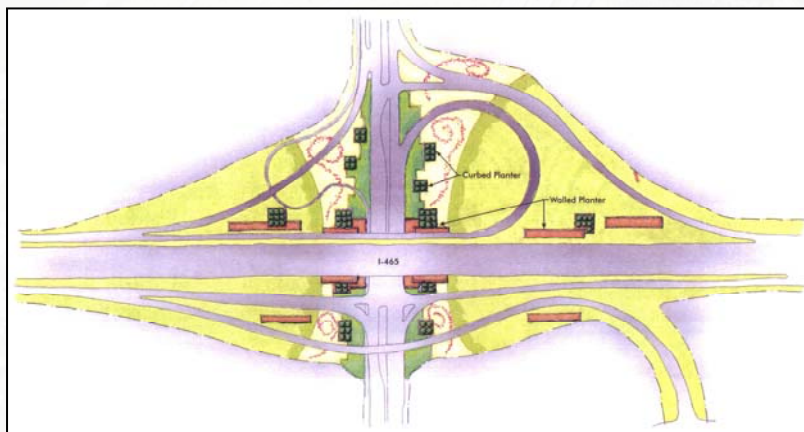


Pedestrian Tunnel

Road School March 30, 2005 -- Page 29

I-465 Fast Track Context Sensitive Solutions

Design Solutions

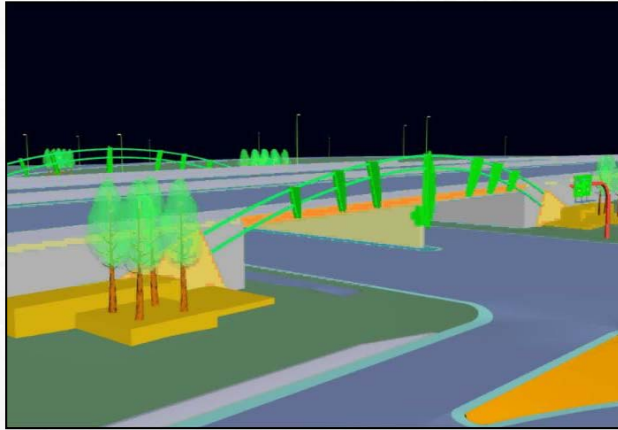


71st & 86th Street Landscape Plan

Road School March 30, 2005 -- Page 30

I-465 Fast Track Context Sensitive Solutions

Design Solutions



Road School March 30, 2005 -- Page 31

I-465 Fast Track Context Sensitive Solutions

Surprises

- Intelligent Transportation System (ITS)
- Utilities versus CSS treatments

Road School March 30, 2005 -- Page 32

I-465 Fast Track Context Sensitive Solutions

Closing Thoughts

- Balance
 - Not necessarily a cost increase
 - Improved overall design & product
 - Increased public satisfaction
- How CSS adds value
 - CSS is not just adding aesthetic treatments but good design
 - Community coordination
- Coordinate & Communicate
- Integrated Design Approach

Contact Info



www.in.gov/dot/div/specialprojects/465/index.html



Mark Zwoyer, PE
317-786-0461
mzwoyer@rwa.com



Jonathan Mooney
317-634-4110
jon@green3.biz



Kevin D. Russell
317-388-8850
kevin@a2so4.com