

INDOT Pavement Preservation

Road School
March 30, 2005

William F. Flora, PE
Pavement Management Engineer
Program Development Division

Pavement Preservation

- What is Pavement Preservation?
- Deployment of Enhanced Pavement Management System (IPMS)
- Integration of Pavement Management with Maintenance Activities
- New Condition Data Collection Efforts
- Current Road Conditions

What is Pavement Preservation?

Applying the Right Fix at the Right Time

- Pavement Management is used to determine possible treatments for:
 - A given set of conditions
 - A given level of funding

Deployment of Enhanced Pavement Management System (IPMS)

- Statewide Pavement Management System
 - Customized for Indiana and updatable by INDOT
 - Suggests possible pavement treatments based on condition and various models
 - Prioritizes projects and develops construction programs based on possible funding levels
 - Shows the long-term effect of funding changes
 - Intranet based delivery of information

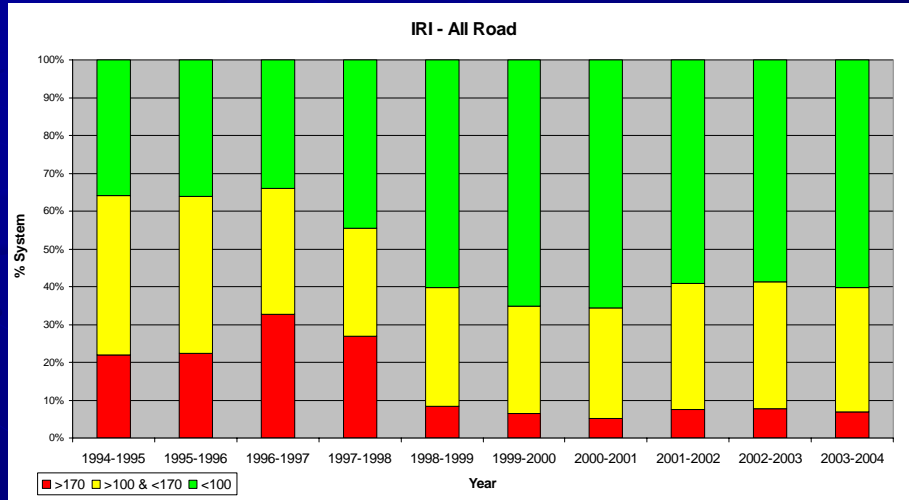
Integration of Pavement Management with Maintenance Activities

- Maintenance Data Integrated with IPMS
 - Maintenance activities tied to locations
 - Useful in determining effective treatments
- Maintenance Activities
 - Preventative Maintenance
 - Crack Sealing, Chip Seal
 - Reactive Maintenance
 - Shallow or Full Depth Patching
- Pavement Management and Maintenance Management working together on the processes

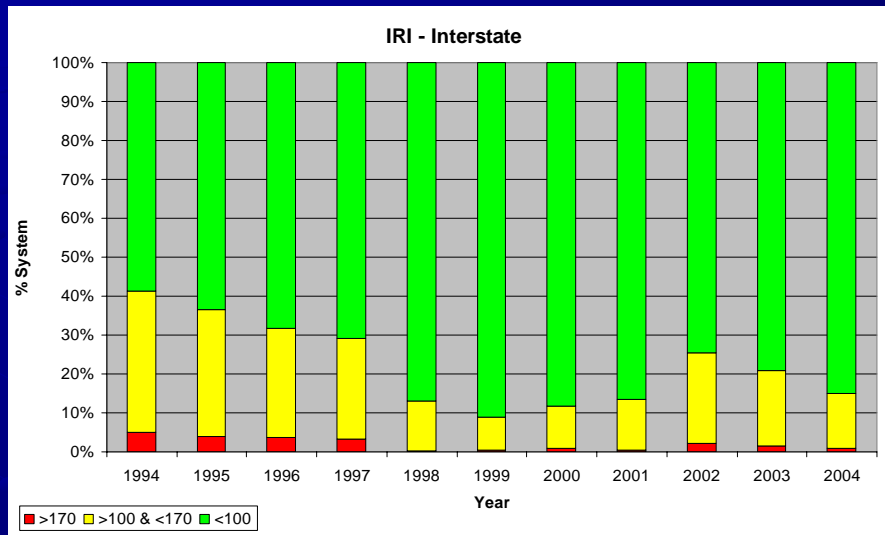
New Condition Data Collection Efforts

- Network Level Structural Data
 - Falling Weight Deflector-(FWD)
 - Will be starting this year
 - Rolling Weight Deflector-(RWD)
 - In development for network level data collection
- New Data Collection Contract
 - Videolog, IRI, PCR, Texture data
 - Improve computer network access
- Friction/Texture Data
 - Study the relationship between friction & texture
 - Develop indexes for use in Pavement Management

Current Road Conditions

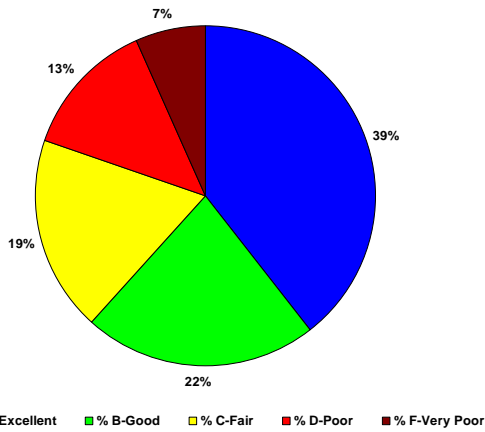


Current Road Conditions



Current Road Conditions

Statewide Pavement Condition 2003-2004 Data



Current Road Conditions

Interstate Pavement Condition 2004 Data

