

Traffic Signal Timing Maintenance




Division of Traffic Control Systems

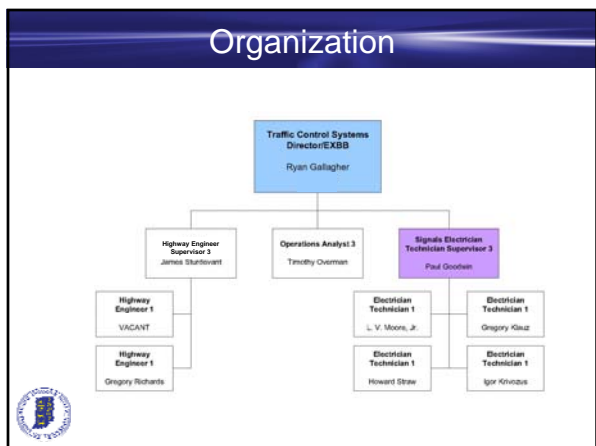


Division of Traffic Control Services

Tasked with:

- Assisting the District Traffic Systems Engineers with retiming coordinated signals
- Providing technical support
- Researching and implementing new technology
- Providing traffic signal equipment & equipment repair.



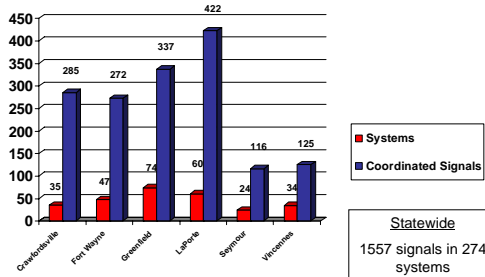


Division of Traffic Control Systems

- District Retiming Plan
 - Four-year cycle to retime all coordinated traffic signal systems.
- District Traffic Systems Engineers
 - Report results for each quarter (system reports, number of signals and systems retimed).
 - Scores are calculated for each district based on the number of coordinated signals in the district divided by 16 (16 quarters/4 year cycle).
 - The average number of signals per quarter retimed is compared to the rate necessary to complete a 4-year cycle (Total retimed/# of quarters).

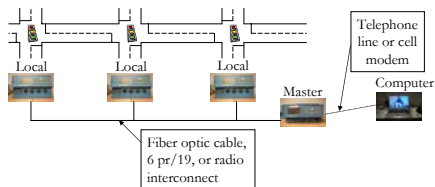


Who has what?



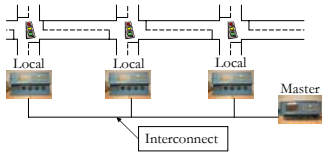
Closed-Loop Systems

- System status can be checked from district office or mobile location with cell modem and laptop. Requires functioning communication between remote computer and master and master and secondary controllers.



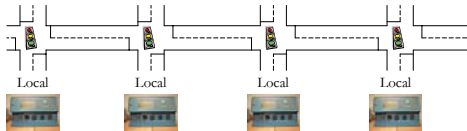
Interconnected Systems (non-closed-loop)

- Requires site visit to master controller location to ensure that master has functioning communication with the secondary controllers and that controllers and detection are functioning correctly.



Time-based Systems

- Requires site visit to ensure that controllers' time clocks are synchronized and the controllers are running the same timing plan.
- Requires site visit to ensure detection is working correctly.



Data Collection

- 12-hour traffic count data (PETRA)
- Road and intersection geometry
- Existing signal timings
- Floating car studies for existing conditions using either count board or GPS units and PC Travel software



System Model Construction

- Build a base model of the system in Synchro using geometric data, speed data, and background aerial.
- Decide on number of peak periods and times they apply.
- Copy and rename model and import traffic data for each peak period.



Existing Model

- Add existing phasing, splits, and offsets for each peak period to Synchro models.



Proposed Model

- Calculate and enter ITE clearance intervals for yellow and all-red periods.
- Use Synchro to optimize existing base model for each peak period.
- Document changes to each run for each period- (cycle lengths, splits, offsets, lead/lag lefts, floating/fixed force-offs, protected/protected-permitted left turns, etc.).
- Select timings for each peak period.



Implementation

- Make changes to signal equipment if necessary.
- Download timings to controllers.
- Observe and adjust offsets and splits where necessary.
- Drive the system, especially during peak periods, to determine performance. One person driving, others making adjustments to system works well.
- One to two weeks afterward, run floating car study again and compare to the "before" study.



Systems Report

- District Traffic Systems Engineers prepare a report for each retimed system containing estimates of fuel saved, travel time saved, and reduction in delay/vehicle, stops/vehicle, and total stops for each peak hour.
- A benefit/cost ratio is calculated from the estimated value of fuel and travel time savings divided by the cost of the retiming effort (including direct and indirect costs).
- Detailed multiple comparisons of Synchro Measures of Effectiveness.
- Before and after floating car study comparison using PC Travel showing overall output statistics and time-space trajectories for peak periods.
- Twelve hour count for each signalized intersection.



Systems Report

System Information

Implementation Date	02/18/07
Number of Signals	14
Interconnect Type	Fiber Optic

Synchro Model Results

Measure	AM	Mid Day	PM
Delays/veh (s)	1	2	3
Stops/veh	0.07	0.04	0.11
Total Stops	1635	1069	3533
Total Travel Time (hr)	9	17	25
Fuel Consumption (gal/hr)	20	20	45

Benefits/Cost Analysis

Estimated Cost	\$17,200.00
----------------	-------------

Benefit	AM Peak	Mid Day Peak	PM Peak	Peak Hour Total
Fuel Savings/yr	\$11,700.00	\$11,700.00	\$26,400.00	\$49,800.00
Time Savings/yr	\$56,100.00	\$105,900.00	\$155,800.00	\$317,800.00
Total	\$67,800.00	\$117,600.00	\$182,200.00	\$367,600.00

B/C Ratio: 10:1



Detailed Multifile Comparison

Multifile Comparison	1	2	3	4
Summary	1	2	3	4
Number of Files	1	1	1	1
File Name	1	1	1	1
File Size	1	1	1	1
File Type	1	1	1	1
File Date	1	1	1	1
File Time	1	1	1	1
File Path	1	1	1	1
File Permissions	1	1	1	1
File Owner	1	1	1	1
File Group	1	1	1	1
File Attributes	1	1	1	1
File Content	1	1	1	1
File MD5	1	1	1	1
File SHA1	1	1	1	1
File SHA256	1	1	1	1
File SHA512	1	1	1	1
File CRC32	1	1	1	1
File CRC64	1	1	1	1
File CRC128	1	1	1	1
File CRC256	1	1	1	1
File CRC512	1	1	1	1
File CRC1024	1	1	1	1
File CRC2048	1	1	1	1
File CRC4096	1	1	1	1
File CRC8192	1	1	1	1
File CRC16384	1	1	1	1
File CRC32768	1	1	1	1
File CRC65536	1	1	1	1
File CRC131072	1	1	1	1
File CRC262144	1	1	1	1
File CRC524288	1	1	1	1
File CRC1048576	1	1	1	1
File CRC2097152	1	1	1	1
File CRC4194304	1	1	1	1
File CRC8388608	1	1	1	1
File CRC16777216	1	1	1	1
File CRC33554432	1	1	1	1
File CRC67108864	1	1	1	1
File CRC134217728	1	1	1	1
File CRC268435456	1	1	1	1
File CRC536870912	1	1	1	1
File CRC1073741824	1	1	1	1
File CRC2147483648	1	1	1	1
File CRC4294967296	1	1	1	1
File CRC8589934592	1	1	1	1
File CRC17179869184	1	1	1	1
File CRC34359738368	1	1	1	1
File CRC68719476736	1	1	1	1
File CRC137438953472	1	1	1	1
File CRC274877906944	1	1	1	1
File CRC549755813888	1	1	1	1
File CRC1099511627776	1	1	1	1
File CRC2199023255552	1	1	1	1
File CRC4398046511104	1	1	1	1
File CRC8796093022208	1	1	1	1
File CRC17592186044416	1	1	1	1
File CRC35184372088832	1	1	1	1
File CRC70368744177664	1	1	1	1
File CRC140737488355328	1	1	1	1
File CRC281474976710656	1	1	1	1
File CRC562949953421312	1	1	1	1
File CRC1125899906842624	1	1	1	1
File CRC2251799813685248	1	1	1	1
File CRC4503599627370496	1	1	1	1
File CRC9007199254740992	1	1	1	1
File CRC18014398509481984	1	1	1	1
File CRC36028797018963968	1	1	1	1
File CRC72057594037927936	1	1	1	1
File CRC144115188075855872	1	1	1	1
File CRC288230376151711744	1	1	1	1
File CRC576460752303423488	1	1	1	1
File CRC1152921504606846976	1	1	1	1
File CRC2305843009213693952	1	1	1	1
File CRC4611686018427387904	1	1	1	1
File CRC9223372036854775808	1	1	1	1
File CRC18446744073709551616	1	1	1	1
File CRC36893488147419103232	1	1	1	1
File CRC73786976294838206464	1	1	1	1
File CRC147573952589676412928	1	1	1	1
File CRC295147905179352825856	1	1	1	1
File CRC590295810358705651712	1	1	1	1
File CRC1180591620717411303424	1	1	1	1
File CRC2361183241434822606848	1	1	1	1
File CRC4722366482869645213696	1	1	1	1
File CRC9444732965739290427392	1	1	1	1
File CRC18889465931478580854784	1	1	1	1
File CRC37778931862957161709568	1	1	1	1
File CRC75557863725914323419136	1	1	1	1
File CRC151115727451828646838272	1	1	1	1
File CRC302231454903657293676544	1	1	1	1
File CRC604462909807314587353088	1	1	1	1
File CRC1208925819614629174706176	1	1	1	1
File CRC2417851639229258349412352	1	1	1	1
File CRC4835703278458516698824672	1	1	1	1
File CRC9671406556917033397649344	1	1	1	1
File CRC19342813113834066795298688	1	1	1	1
File CRC38685626227668133590597376	1	1	1	1
File CRC77371252455336267181194752	1	1	1	1
File CRC15474250491067253436239488	1	1	1	1
File CRC30948500982134506872478976	1	1	1	1
File CRC61897001964271013744957952	1	1	1	1
File CRC12379400392854202748995904	1	1	1	1
File CRC24758800785708405497991808	1	1	1	1
File CRC49517601571416810995983616	1	1	1	1
File CRC99035203142833621991977232	1	1	1	1
File CRC19807040628567344393954464	1	1	1	1
File CRC39614081257134688787908928	1	1	1	1
File CRC79228162514269377575781856	1	1	1	1
File CRC158456325028538755151563712	1	1	1	1
File CRC316912650057077510303127424	1	1	1	1
File CRC63382530011415502060625488	1	1	1	1
File CRC126765060022831004121250976	1	1	1	1
File CRC253530120045662008242511936	1	1	1	1
File CRC507060240091324016485031872	1	1	1	1
File CRC101412048018264803297007344	1	1	1	1
File CRC202824096036529606594014688	1	1	1	1
File CRC405648192073059213188029376	1	1	1	1
File CRC811296384146118426376058752	1	1	1	1
File CRC1622592768292236852752117504	1	1	1	1
File CRC3245185536584473705504235008	1	1	1	1
File CRC6490371073168947411008470016	1	1	1	1
File CRC1298074214337895482201940032	1	1	1	1
File CRC2596148428675790964403880064	1	1	1	1
File CRC5192296857351581928807760128	1	1	1	1
File CRC10384593714623763677615520256	1	1	1	1
File CRC20769187429247527355231040512	1	1	1	1
File CRC41538374858495054710462081024	1	1	1	1
File CRC83076749716990109420924162048	1	1	1	1
File CRC166153499433980218841848324096	1	1	1	1
File CRC332306998867960437683696648192	1	1	1	1
File CRC664613997735920875367393296384	1	1	1	1
File CRC1329227995471841750735486572768	1	1	1	1
File CRC2658455990943683501470973145536	1	1	1	1
File CRC5316911981887367002941946291072	1	1	1	1
File CRC10633823963774734005883892582144	1	1	1	1
File CRC212676479275494680117677851648	1	1	1	1
File CRC425352958550989360235355703296	1	1	1	1
File CRC850705917101978720470711406592	1	1	1	1
File CRC170141183420395744094142281184	1	1	1	1
File CRC340282366840791488188284562368	1	1	1	1
File CRC680564733681582976376569124736	1	1	1	1
File CRC1361129467363165952753138249152	1	1	1	1
File CRC272225893472633190550627648384	1	1	1	1
File CRC544451786945266381101255296768	1	1	1	1
File CRC10889035739105327222025105536	1	1	1	1
File CRC217780714782106544440502110672	1	1	1	1
File CRC435561429564213088881004221344	1	1	1	1
File CRC871122859128426177762008442688	1	1	1	1
File CRC174224571856852355524016885376	1	1	1	1
File CRC348449143713704711104813770752	1	1	1	1
File CRC696898287427409422081674151504	1	1	1	1
File CRC139379657485481884412344283008	1	1	1	1
File CRC278759314970963768824688566016	1	1	1	1
File CRC557518629941927537649377132032	1	1	1	1
File CRC1115037259883855075298954264064	1	1	1	1
File CRC2230074519767710150597908528128	1	1	1	1
File CRC4460149039535420301195805656256	1	1	1	1
File CRC8920298079070840602391611312512	1	1	1	1
File CRC17840596158141681204782222625024	1	1	1	1
File CRC35681192316283362409564445250048	1	1	1	1
File CRC7136238463256672481912889050016	1	1	1	1
File CRC1427247692651334496382577810032	1	1	1	1
File CRC2854495385302668992765154420064	1	1	1	1
File CRC5708990770605337985530308840128	1	1	1	1
File CRC11417981541210675971060617682256	1	1	1	1
File CRC2283596308242135194212123524512	1	1	1	1
File CRC4567192616484270388424247049024	1	1	1	1
File CRC9134385232968540776848494098048	1	1	1	1
File CRC1826877046593708155369698819776	1	1	1	1
File CRC365375409318741630673917739552	1	1	1	1
File CRC7307508186374832613478354791104	1	1	1	1
File CRC1461501637274966522695670958208	1	1	1	1
File CRC2923003274549933045391341916416	1	1	1	1
File CRC5846006549099866090782683832832	1	1	1	1
File CRC11692013098199732181565367665664	1	1	1	1
File CRC23384026196399464363131315331328	1	1	1	1
File CRC46768052392798928726262630662656	1	1	1	1
File CRC9353610478559785745252526132512	1	1	1	1
File CRC18707220957119571490510052265024	1	1	1	1
File CRC37414441914239142981010104530048	1	1	1	1
File CRC74828883828478285962020209060096	1	1	1	1
File CRC149657767656956571924040418120192	1	1	1	1
File CRC299315535313913139488080836240384	1	1	1	1
File CRC598631070627826278976161672480768	1	1	1	1
File CRC1197262141255652557952323344951536	1	1	1	1
File CRC2394524282511305115599046466903072	1	1	1	1
File CRC4789048565022610211198081293806144	1	1	1	1
File CRC957809713004522042239615867612288	1	1	1	1
File CRC191561942600904404478223735224576	1	1	1	1
File CRC38312388520180880895644747045504	1	1	1	1
File CRC76624777040361761791289494091008	1	1	1	1
File CRC15324954408072352358247898818016				

Maintenance After the Fact

After the effort and expense put into retiming coordinated signal systems, what must we do to keep them functioning?

- Scheduled signal maintenance and inspections.
- For time-based, regular controller clock checks.
- Functioning detection.



2007 Results

- District results in 2007- Estimates based on Synchro projections from before and after runs

2007 Signal Systems Retiming Estimate of Benefits							
District	No. of Signals Retimed	No. of Systems Retimed	Fuel Savings	Delay Reduction	CO Reduction	VOC Reduction	NOx Reduction
			gallons	hours	lbs.	lbs.	lbs.
Crawfordsville	70	11	32,647	24,817	4,918	1,132	965
Fort Wayne	70	15	3,458	4,502	620	138	118
Greenfield	87	12	39,998	37,410	6,130	1,413	1,193
LaPorte	71	10	194,902	313,070	29,932	6,928	5,830
Seymour	36	7	34,430	37,084	5,297	1,228	1,023
Vincennes	38	11	21,032	21,141	3,185	742	619
Statewide Total	372	66	326,468	438,023	50,082	11,582	9,749



Future Plans

- Count Loops
- Cell modems
- Central Data Collection and Storage
- NTCIP Controllers
- Ethernet/TCP-IP PC Communications
- Central Systems- Systems Integration Software



Questions?

Gregory J. Richards
TCS Signal Operations Engineer
Division of Traffic Control Systems
(317)233-3947
grichards@indot.in.gov