

**Conference Proceedings
of the
94th Annual
Purdue Road School**

March 25-27, 2008



CHAIRMEN

Kumares C. Sinha

Olson Distinguished Professor, School of Civil Engineering
Director, Joint Transportation Research Program

and

Jon D. Fricker

Professor, School of Civil Engineering
Board Member, Indiana Local Technical Assistance Program



PROGRAM COORDINATORS

Karen S. Hatke

Program Coordinator
Joint Transportation Research Program

John A. Habermann

Program Manager
Indiana Local Technical Assistance Program



**Purdue University
West Lafayette, Indiana**

**Engineering Extension Series
No. 179**

Purdue University

Purdue University is one of the 68 land-grant colleges and universities that owe their origin to the Land-Grant Act of 1852, otherwise known as the Morrill Act. Three years after the act's passage, the General Assembly of Indiana voted to begin preliminary plans for a school devoted primarily to the agricultural and mechanical arts.

In 1869, the Assembly voted to accept a gift of land and money from John Purdue and other generous Lafayette citizens, and, in appreciation, declared the name of the new institution to be Purdue University. The University is assisted by state appropriations, with support by federal grants and corporate and individual contributions.

Actual instruction began in 1874 with 39 students and a faculty of six. Today, Purdue University enrolls more than 65,000 students at the following locations:

West Lafayette
Calumet (Hammond)
Indiana University-Purdue University Fort Wayne
Indiana University-Purdue University Indianapolis
North Central (Westville)
plus 11 School of Technology statewide delivery system locations

Instruction is organized through the schools of Agriculture, Consumer and Family Sciences, Education, Liberal Arts, Management, Pharmacy, Nursing, Health Sciences, Science, Technology; and Veterinary Medicine; and through the College of Engineering, the Graduate School, and Departments as follows:

College of Engineering Schools

Aeronautics and Astronautics
Chemical
Civil
Electrical and Computer
Industrial
Materials
Mechanical
Nuclear Engineering

Departments

Agricultural and Biological Engineering
Construction Engineering and Management
Freshman Engineering
Division of Interdisciplinary Engineering Studies

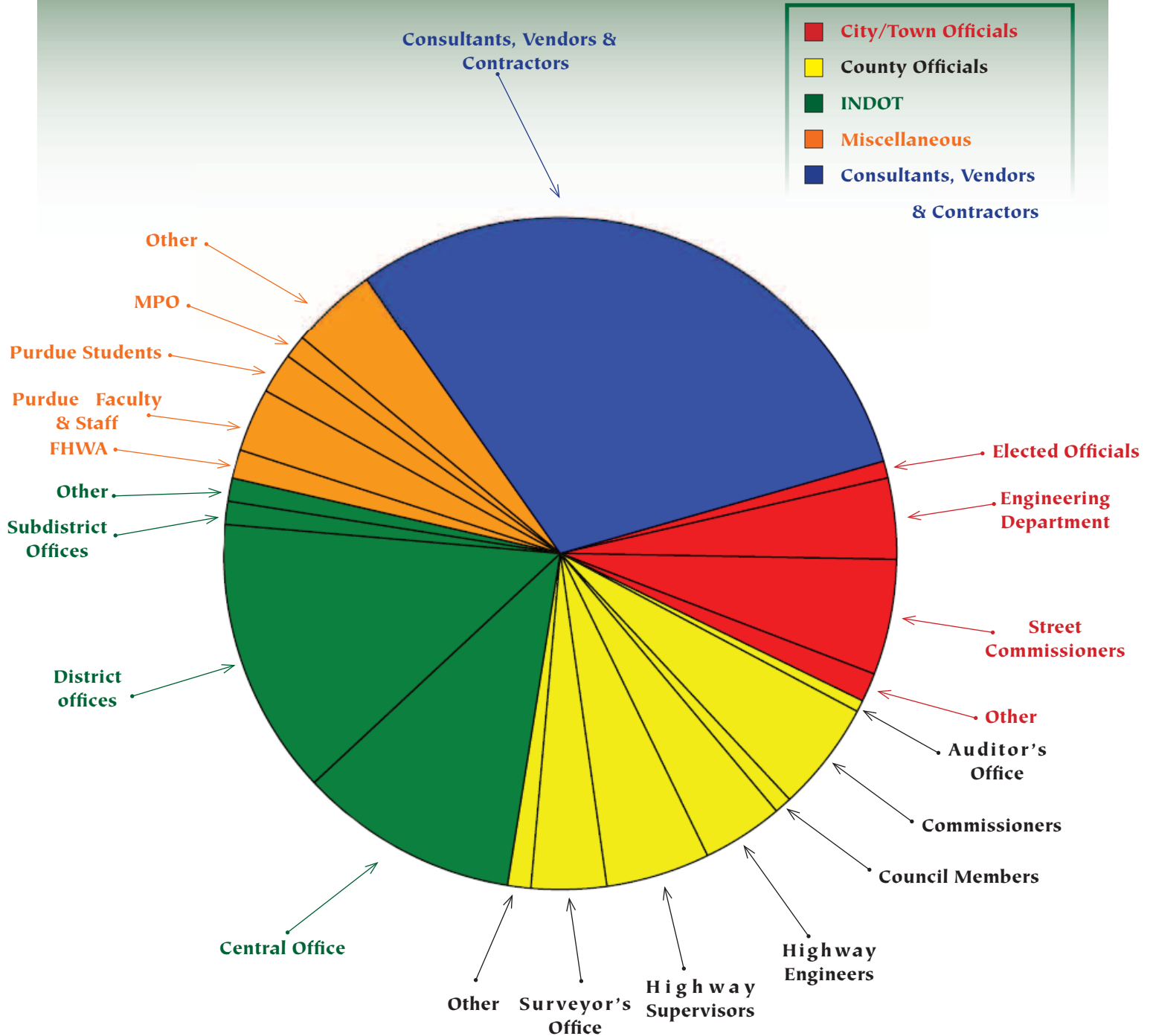
Extensive research programs are maintained by nearly all academic areas of the University. The Cooperative Extensive Service, through the county agents, services the entire state. A variety of courses are offered through the conferences program and continuing education services sponsored by the University.

The College of Engineering
at
Purdue University

Graduate degrees are offered in the fields of aeronautics and astronautics and interdisciplinary engineering studies, and in agricultural, chemical, civil, electrical, industrial, mechanical, materials, and nuclear engineering.

Research activities in these fields are conducted as a part of the program of graduate instruction with students participating under the direction of their professors. The programs of graduate research and education in the engineering schools are increasingly concerned with the fundamentals of the physical sciences and mathematics, as the engineering profession faces increasing responsibilities for dealing with problems whose solutions lie at the frontiers of knowledge.

2008 ROAD SCHOOL ATTENDANCE



	2004	2005	2006	2007	2008
	March 10-11	March 29-31	March 28-30	March 6-8	March 25-27
CITY/TOWN OFFICIALS					
Elected Officials	16	6	15	6	14
Engineering Department	59	52	58	56	68
Street Commissioners	77	72	76	54	94
Other	23	3	33	25	25
SUBTOTAL	175	133	182	141	201
COUNTY OFFICIALS					
Auditor's Office	20	20	13	14	10
Commissioners	95	110	95	86	94
Council Members	7	9	5	6	11
Highway Engineers	106	76	64	60	67
Highway Supervisors	83	95	95	85	90
Surveyor's Office	54	61	55	55	59
Other	18	0	20	10	22
SUBTOTAL	383	371	347	316	353
INDOT					
Central Office	167	111	121	148	179
District Offices	136	122	153	196	231
Subdistrict Offices	27	13	19	15	21
Other	6	0	26	8	18
SUBTOTAL	336	246	319	367	449
MISCELLANEOUS					
FHWA	17	14	18	15	24
Purdue University Faculty/Staff	37	50	35	29	56
Purdue University Students	45	52	77	26	33
MPO	8	12	12	25	18
Other	92	26	85	82	73
SUBTOTAL	199	154	227	177	204
CONSULTANTS, VENDORS & CONTRACTORS					
SUBTOTAL	594	331	426	476	523
GRAND TOTALS	1687	1235	1501	1477	1730



2008 Road School Speakers

A New Way of Doing Business

Greg Kicinski	Manager, Office of Project Management	INDOT	317-234-1534	gkicinski@indot.in.gov
Eric Rader	Roadway Inventory Supervisor	INDOT	317-232-5482	wrader@indot.in.gov
Kirk Mangold	Program Director, Traffic Monitoring Section	INDOT	317-233-3690	kmangold@indot.IN.gov

Asphalt Pavement for Local Governments

Brad Cruea	Quality Control Manager	Milestone Contractors, L.P.	317-788-6885	brad.cruea@milestonelp.com
Dave Andrews	Manager, Office of Pavement Engineering	INDOT	317-232-5452	dandrewski@indot.in.gov
Laurie Maudlin	Vice President	APP/IAN	317-822-9206	lmaudlin@appianadvisors.com
Scott Trammell	Pavement Maintenance Engineer	INDOT	317-234-5665	strammell@indot.in.gov
Todd Shields	Pavement Preservation Engineer	INDOT	317-233-3345	tshields@indot.in.gov

Back to Basics: Bridge Design and Inspection

Robert J. Connor	Assistant Professor	Purdue University	765-496-8272	rconnor@purdue.edu
------------------	---------------------	-------------------	--------------	--------------------

Back to Basics: Common Geometric Design Problems and Solutions

Chris Rops	Project Director - Engineering	HNTB	317-636-4682	crops@hntb.com
Christina Colon	Project Manager	HNTB Indiana, Inc.	317-636-4682	ccolon@hntb.com
Dave McDougall		HNTB Indiana, Inc.		dmcougall@hntb.com
Erica Pugh	Project Engineer	HNTB Indiana, Inc.	317-636-4682	epugh@hntb.com
Jennifer Goins	Transportation Engineer	HNTB Indiana, Inc.	317-636-4682	jgoins@hntb.com

Back to Basics: Estimating for Success

Allen R. Eglimez, P.E.	Transportation Department Manager	United Consulting	317-895-2585	allene@ucindy.com
Audra Butts	Economist	INDOT	317-234-5142	abutts@indot.in.gov
Dan Stickney	Construction Cost Manager	INDOT	317-234-4759	dstickney@indot.in.gov
Daniel McCoy	Highway Engineer	INDOT	317-233-3943	dmccoy@indot.in.gov
Jeremy VanVleet	Highway Engineer	INDOT	317-232-5231	jvanvleet@indot.IN.gov
Ken Simonson	Chief Economist	Associated General Contractors of America	703-837-5313	simonsonk@agc.org

Back to Basics: Pavement and Asset Management

Bill Flora	Pavement Management Engineer	INDOT	317-535-5674	wflora@indot.in.gov
Joyce Stone	Pavement Management Engineer	INDOT	317-234-5726	JStone@indot.in.gov
Raymond Ong	Postdoctoral Research Associate	Purdue University	765-494-2255	ongr@purdue.edu
Samy Nouredin	Transportation Systems Research Section Manager	INDOT	765-463-1521	snouredin@indot.in.gov

Back to Basics: Utility Coordination

Gail Lee	Highway Utility Engineer	INDOT	317-232-5208	glee@indot.in.gov
Joe Gundersen	Senior Utility Engineer	INDOT	317-234-5199	jgundersen@indot.in.gov
Matt Thomas	Utility/Railroad Manager	INDOT	317-232 5308	mthomas@indot.in.gov

Back to Basics: Work Zone Safety...the New Rule

David Boruff	Work Zone Program Engineer	INDOT	317-232-5222	dboruff@indot.in.gov
Pat McCarty	Supervisor of Work Zone Safety Section	INDOT	317-234-5114	jmccarty@indot.in.gov
Rick O. Drumm	Safety Engineer	FHWA Indiana Division	317-226-7487	rick.drumm@fhwa.dot.gov

Chip Seal Best Practices

Scott Shuler	Associate Professor	Colorado State University	720-289-2153	scott.shuler@colostate.edu
--------------	---------------------	---------------------------	--------------	----------------------------

Creating and Maintaining Your Community's Identity

Aaron Lyons	Street Department	City of Delphi	765-564-2353	street@cityofdelphi.org
Randy Strasser	Mayor	City of Delphi	765-564-3039	mayor@cityofdelphi.org
Raymie Eckerle	Street Commissioner	City of Jasper	812-482-1130	streetdept@ci.jasper.in.us
Todd Zeiger	Director, Northern Regional Office	Historic Landmarks Foundation of Indiana	574-232-4534	tzeiger@historiclandmarks.org

CSS: Being More Responsive to Your Stakeholders

Jeanette Wilson	Local Federal-Aid Special Projects	INDOT	317-232-5496	jwilson@indot.in.gov
Jill Palmer	Project Manager	The Schneider Corporation	317-826-7129	jpalmers@schneidercorp.com

Emerging Concrete Pavement Technologies

Ashley Frantz	Promotion Manager	IRMCA	812-340-2323	afrantz@irmca.com
Christopher R. Tull, PE	Owner	CRT Concrete Consulting, LLC	317-270-4428	christull@sbcglobal.net
Jerry Larson	Promotions Manager	Indiana Ready Mixed Concrete Association	317-872-6302	jl Larson@irmca.com
Jessica J. Clark, PE	St. Joseph County Engineer	St. Joseph County Dept. of Public Works	574-235-9626	jclark@co.st-joseph.in.us

Erosion Control on Construction Sites

Janice Osadczuk	Planning and Environmental Specialist	FHWA Indiana Division	317-226-7486	janice.osadczuk@fhwa.dot.gov
Michelle Allen	Manager, Office of Environmental Services	INDOT	317-232-5135	mballen@indot.in.gov
Richard Phillabaum	Permit Manager	INDOT	317-233-5151	rphillabaum@indot.in.gov

Financing Issues

Bernie M. Seel	Chief Financial Officer & Deputy Commissioner	INDOT	317-232-1472	bseel@indot.in.gov
Gary G. Eaton	Director of Budget, Procurement and Project Accounting	INDOT	317-232-5643	geaton@indot.in.gov
Mark Newland	Financial Manager	FHWA Indiana Division	317-226-7482	mark.newland@fhwa.dot.gov

Freight Corridors of the Future...Freight Mobility

Don Sansone	Director Supply Chain	Red Gold	765-754-7527	dsansone@redgold.com
Kate Quinn	Team Leader	FHWA	202-366-4241	kate.quinn@dot.gov
Keith J. Bucklew	Director of Freight Mobility	INDOT	317-233-2376	KBucklew@indot.in.gov

Greening Your Fleet

Kellie Walsh	Executive Director	Central Indiana Clean Cities Alliance (CICCA)	317-985-4380	klwicca@aol.com
Larry Speicher	Fleet Account Executive	General Motors North Central Region	630-778-4941	larry.d.speicher@gm.com

Highway Administration and Management 101 for Local Officials

Charlie Pride	Supervisor-Cities and Towns	State Board of Accounts	317-232-2521	cpride@sboa.in.gov
Dan Bastin	Settlement Director	Auditor of State	317-232-3309	dbastin@auditor.in.gov
Debra Gibson	County Supervisor	State Board of Accounts		
Tammy White	County Office Supervisor	State Board of Accounts	317-232-2512	twhite@sboa.in.gov

Indiana Street Commissioners Meeting

David Barrabee	Senior Homeland Security Planner	Indiana Dept. Homeland Security	317-233-6116	dbarrabee@dhs.in.gov
----------------	----------------------------------	---------------------------------	--------------	----------------------

INDOT 2007 Statewide Interchange Study

Bill Wiedelman	Principal Engineer	HNTB Corporation	317-636-4682	wwiedelman@yahoo.com
----------------	--------------------	------------------	--------------	----------------------

INDOT Local Federal Aid Programs Update

Bob Tally	Division Administrator	FHWA Indiana Division	317-226-7476	Robert.Tally@dot.gov
John Jordan	Director, Local Programs Division	INDOT	317-232-0682	jjordan@indot.in.gov
Rick Whitney	Manager LPA Federal Aid	INDOT	317-232-5190	rwhitney@indot.in.gov

INDOT Meeting

Craig Parks	Project Development Director	American Structurepoint, Inc.	317-547-5580	cparks@structurepoint.com
Gary Kreutzjans	Project Engineer	INDOT-Seymour District		
Gary Pence P.E.	Project Management Engineer	INDOT	317-232-5198	gpence@indot.in.gov
Ike DeBurger	Project Engineer	INDOT-Seymour District		
Jim Poturalski	Deputy Commissioner, Highway Management	INDOT	317-234-0410	jpoturalski@indot.in.gov
Mark Miller	Director of Construction Management	INDOT	317-232-5456	mrmiller@indot.in.gov
Mike Cline	Deputy Commissioner of Operations	INDOT	317-232-5523	mcline@indot.in.gov
Tom Estes	CSA Design Coordinator, Honda Project	Global Performance	812-222-0250	

INDOT Planning Organizational Changes

David Holtz	Director, Integrated Planning Division	INDOT	317-233-1524	dholtz@indot.in.gov
-------------	--	-------	--------------	---------------------

Integrated Solutions for Transportation

Dan DeLaurentis	Assistant Professor/Aeronautics & Astronautics	Purdue University		
Sam Labi	Asst. Professor	Purdue University	765-494-5926	labi@ecn.purdue.edu
Srinivas Peeta	Director, NEXTRANS Center and Professor of Civil Engineering	Purdue University	765-496-9729	peeta@purdue.edu

Leadership as an Attitude

Rodney Vandever	Professor	Purdue University	765-494-6804	vandever@purdue.edu
-----------------	-----------	-------------------	--------------	---------------------

Listen to Me!!

Branna M. Smith	WorkLife Manager	Purdue WorkLife Programs	765-496-3084	branna@purdue.edu
-----------------	------------------	--------------------------	--------------	-------------------

Maintenance Issues

Andrew Carter	Field Engineer	INDOT - Vincennes	812-830-9042	acarter@indot.in.gov
Bill Campbell	Manager, Productivity and Technology Solutions Division	MacAllister Machinery	317-860-4457	billcampbell@macallister.com
Janie Chenault	Paoli Operations Manager	INDOT	812-723-3184	jchenault@indot.in.gov
John Burkhardt	Management Analyst	INDOT	317-234-4758	jburkhardt@indot.in.gov
Sarah McKeown	Environmental Scientist	INDOT	317-234-4915	smckeown@indot.in.gov
Scott Trammell	Pavement Maintenance Engineer	INDOT	317-234-5665	strammell@indot.in.gov
Steve Rininger	Vincennes District Liaison	INDOT	812-895-7334	srininger@indot.in.gov
Todd Shields	Pavement Preservation Engineer	INDOT	317-233-3345	tshields@indot.in.gov

Major Moves...on the Move!

Greg Kicinski	Manager, Office of Project Management	INDOT	317-234-1534	gkicinski@indot.in.gov
---------------	---------------------------------------	-------	--------------	------------------------

MPO Issues

Jerry Bridges	Executive Director	Madison County Council of Governments	765-641-9482	jbridges@mccog.net
Trent Pell	GIS Coordinator	Madison County Council of Governments	765-641-9482	tpell@mccog.net

Native Plants...the Good, the Bad, the Ugly

Neil Diboll	President	Prairie Nursery	608-429-3004	ndiboll@prairienursery.com
-------------	-----------	-----------------	--------------	----------------------------

Opening Session

Karl Browning	Commissioner	INDOT	317-232-5525	kbrowning@indot.in.gov
Robert A. DeHaan	Deputy Assistant Secretary	Department of Transportation		robert.dehaan@dot.gov

Our Future is Full of Risk

Jon Schans	Transportation Specialist	FHWA	202-366-9071	jon.schans@dot.gov
------------	---------------------------	------	--------------	--------------------

Road Scholar Core Course #11: Plan Reading

Bob McCullouch	IT Administrator/JTRP	Purdue University	765-494-0643	bgm@purdue.edu
Matt Taylor	Managing Principal	Level 5 Engineering	317-686-9900	mtaylor@level5eng.com
Michael Eichenauer		Butler Fairman & Seufert		
Phil Kuntz	Vice President	Janssen & Spaans Engineering	317-254-9686	pkuntz@jsengr.com

Road Scholar Core Course #12: Estimating Construction Costs and Quantities

Bob Hearn	Civil Engineer	City of Baton Rouge	225-278-9406	bhearn@brgov.com
-----------	----------------	---------------------	--------------	------------------

RPOs...What Are They and How Can They Help You?

Gil Viets	Chief of Staff	INDOT	317-234-2780	gviets@indot.in.gov
Jill Saegesser	Executive Director	River Hills EDD & RPC	812-288-4624	jsaegesser@riverhills.cc
Nancy Kinder	Executive Director	Eastern Indiana Development District	765-521-0931	nkinder@eidid.org
Phillip Anderson	Executive Director	Indiana Rural Development Council, Inc.	317-275-2245	panderson@ruralindiana.org

Safety Issues: Traffic Safety on a Restricted Budget

Brad Steckler	Director, Engineering Programs Division	INDOT	317-232-5137	bsteckler@indot.in.gov
George Hartman	County Engineer	Franklin County	765-647-3265	none
Mike Holowaty	Manager, Traffic Safety Office	INDOT	317-232-5337	mholowaty@indot.in.gov
Rick O. Drumm	Safety Engineer	FHWA Indiana Division	317-226-7487	rick.drumm@fhwa.dot.gov

Show Me the Money!

Keith Hoernschemeyer	Division Bridge Engineer	FHWA Indiana Division	317-226-7490	keith.hoernschemeyer@fhwa.dot.gov
Rosemary Petersen	IDHS Public Assistance Program Director	Indiana Department of Homeland Security	317-508-1523	rpetersen@dhs.in.gov
Shane A. Booker	Deputy Director of Operations	Indiana Department of Homeland Security	317-232-3841	sbooker@dhs.in.gov

Signal Timing Maintenance

Greg Richards	TCS Signal Operations Engineer	INDOT	317-233-3947	grichards@indot.in.gov
Jay Grossman	Project Engineer	Elkhart County Highway	574-534-9394	jgrossman@elkcohw.org
Lenny Addair	Assistant Administrator	City of Indianapolis	317-327-2935	laddair@indygov.org

Successful Native Planting...Location, Location, Location

Mark O'Brien	Vice President JFNew Native Plant Nursery	JFNew	574 586-2412	mobrien@jfnew.com
Ryan Allison	Unit Manager, N. Indiana	JFNew	574-586-2412	rallison@jfnew.com

The Silent Killer

Bill Haan	Executive Director	Indiana Association of County Commissioners	765-538-2577	IACC@Bill-Haan.com
Jim Olson	County Highway Engineer	Jefferson County	812-273-1708	jchd@seidata.com
Jodi Coblentz, P.E.	Highway Director	Cass County	574-753-6766	jodi.coblentz@co.cass.in.us
Stephanie Yager	Commissioner	Brown County Commissioners	812-988-2341	yager07@sbcglobal.net

The Slope Shouldn't Have Failed...

Pete Nix	Geotechnical Engineering/Drilling Manager	DLZ Ohio, Inc.	614-888-0040	pnix@dlz.com
----------	---	----------------	--------------	--------------

Transportation Issues - Indiana ITE

Alf Guebert	Vice President	TSH Associates LTD	403-258-1171	aguebert@ish.ca
Andrew Tarko	Professor	Purdue University	765-494-5027	tarko@purdue.edu
Dan Shamo	Senior ITS Engineer	URS	317-532-5423	dan_shamo@urscorp.com
Mike Dreznes	Deputy Director General	International Road Federation	312-945-0018	mdreznes@irfnews.org
Mike McBride	Director of Engineer	City of Carmel	317-571-2441	mmcbride@carmel.in.gov

Urban Issues I

Connor Shaw	Possibility Place Nursery	708-534-3988	oakguy@possibilityplace.com
David Kissel		812-388-7269	bdkiss@rtccom.net
Jim Farr	Davey Resource Group	812-597-5770	jfarr@davey.com

Urban Issues II

Philip McGrath	PubWorks / Tracker Software Corp.	719-264-1850	philip@trackersoftwarecorp.com
----------------	-----------------------------------	--------------	--------------------------------

When Disaster Strikes...How to Respond!

Larry Thompson	Mayor	574-773-2112	nappcity@yahoo.com
Tom Sorel	Division Administrator	651-291-6102	Tom.Sorel@fhwa.dot.gov
Wayne Scheumann	Superintendent Streets & Sanitation/Parks & Rec.	574-773-2112	nappaneeparks@yahoo.com

Whitesell Cemetery Relocation

Christopher Koeppel	Administrator, Cultural Resources Section	317-232-5161	ckoeppel@indot.in.gov
Ryan Peterson	Senior Archaeologist	317-713-1700	ryan.peterson@amec.com

2008 Purdue Road School Planning Meeting

August 10, 2007



First Row: Joe Novak, Paul Berebitsky, Tom Robertson, Jim Olson, Gary Eaton, KD Benson, John Haddock, Jason Weiss
Second Row: Rob Roberts, John Habermann, Kumares Sinha, Walt Land, Gary Mroczka, Bill Haan, Barry K. Partridge
Third Row: Eric Conklin, Dan Keefer, Jerry Bridges
Fourth Row: William Flora, Tommy Nantung, Eryn Fletcher, David Whitworth, Jodi Coblentz, Karen Hatke, Shelley Hancy, Jon Fricker,
Bob McCullouch, Greg Ellis
Fifth Row: Mike Byers, Wes Shaw, Lisa Weicker, Phil Beer



MAJOR NEW/ RECONSTRUCTION – URBAN

Project Name; SR 37 Marion County

Owner: INDOT

Contractor: Reith-Riley Construction Co., Inc.

Designer: FPBH, Inc.

First row: Mark Miller, Robert Williams, Von Luhmann, Barry Mosier, John Tuddy, Colby King, Bob Tally;

Second row: James Culbertson, Rodney Lemke, Jeff Frayman, Bernie Hauersperger



NEW/RECONSTRUCTION – RURAL

Project Name – Industrial Park Drive

Owner: City of Portland

Contractor: LICA Construction

Designer: The Schneider Corporation

Mark Miller, Bruce Hosier, Mark LeFever, Jeff Harker, Chris Ogg, Bob Tally



PAVEMENT / URBAN

Project Name: R & S 90701/3-1 Breman Highway Rehab

Owner/Designer: St. Joseph County

Contractor: Reith-Riley Construction Co., Inc.

Mark Miller, Marc Diamente, Todd Gosc, Chris Weinkauff, Jamie Czarnecki, Bob Tally



PAVEMENT / RURAL
Project Name: SR 265 Pavement Replacement and Drainage Correction
Owner: INDOT

Contractor: Dave O'Mara Construction
Designer: Earth Tech

First row: Mark Miller, Bradley Miller, Jon Wick, Becky Gross, Rob O'Mara, Robert Williams, Jeff Fuller
Second row: Michael Preboske, Bryan Royalty, Bob Tally



BRIDGES / RURAL

Project Name: Rehabilitation of Carroll County Bridge No. 132

Contractor: Wirtz and Yates

Designer: Butler, Fairman and Seufert, Inc.

First row: Mark Miller, George Wells, Jon Sera, Francis Yates, Bob Tally

Second row: Larry Wirtz, Loren Hylton, Ron Francis, Steve Weintraut



SPECIAL PROJECTS / UNDER \$2,000,000

Project Name: R-29388 – Nappanee Bike/Pedestrian Facilities

Owner: City of Nappanee and INDOT

Contractor: Reith-Riley Construction Co., Inc.

Designer: Landplan Group, Inc. and INDOT

First row: Mark Miller, Todd Gosc, Dave Weadock, Jim Keefer, Chris Weinkauff, Larry Thompson, Denny Cobb, Bob Tally;

Second row: Kevin McCrory, Jamie Czarnecki, Mike Koch, Wayne Scheumann, Ron Bacewic, Marc Diamente

**94TH PURDUE ROAD SCHOOL
CONFERENCE PROCEEDINGS
TABLE OF CONTENTS**

Cover/Introduction

2008 Purdue Road School Steering Committee

2008 Official Purdue Road School Program

2008 Purdue Road School Attendance History

2008 Road School Speaker Contact List

Asphalt Pavement for Local Governments

Dave Andrews

Laurie Maudlin

Todd Shields/Scott Trammell

Back to Basics: Estimating for Success

Audra Butts/Dan McCoy/Jeremy VanVleet

Kenneth Simonson

Back to Basics: Pavement and Asset Management

Samy Nouredin/William Flora/Joyce Stone/Raymond Ong

Asset Management Overview

Pavement Distress Identification – Jointed Concrete Pavements

Pavement Distress Identification – Asphalt Pavements

Pavement Evaluation Resources Supporting PMS Program

Best Use of PMS Program Information

Back to Basics: Utility Coordination

Joe Gundersen

Gail Lee

Chip Seal Best Practices

Scott Shuler

CSS: Being More Responsive to Your Stakeholders

Jill Palmer

Emerging Concrete Pavement Technologies

Christopher Tull

Financing Issues

Mark Newland

Freight Corridors of the Future...Freight Mobility

Donald Sansone

Highway Administration and Management 101 for Local Officials

Dan Bastin

Tammy White

INDOT 2007 Statewide Interchange Study
William Wiedelman

INDOT Planning Organization Changes
David Holtz

Integrated Solutions for Transportation
Samuel Labi

Leadership as an Attitude
Rodney Vandever

Native Plants...the Good, the Bad, the Ugly
Neil Diboll

Maintenance Issues
John Burkhardt
Todd Shields/Scott Trammell

Opening Session
IPHQ Award Photos

Signal Timing Maintenance
Gregory Richards

The Silent Killer...and the Irreplaceable Role of County Commissioners
Jim Olson/Jodi Coblentz

Urban Issues I
Jim Farr