

Red Flag Investigations

Kenneth McMullen
Environmental Policy Manager
Indiana Department of Transportation



Purdue Road School 5 March 2013



Preparing a Red Flag Investigation

- Text and graphics
- INDOT's Red Flag Investigation Template
 - <http://www.in.gov/indot/2523.htm>
(towards bottom of page under "Hazardous Materials Information")

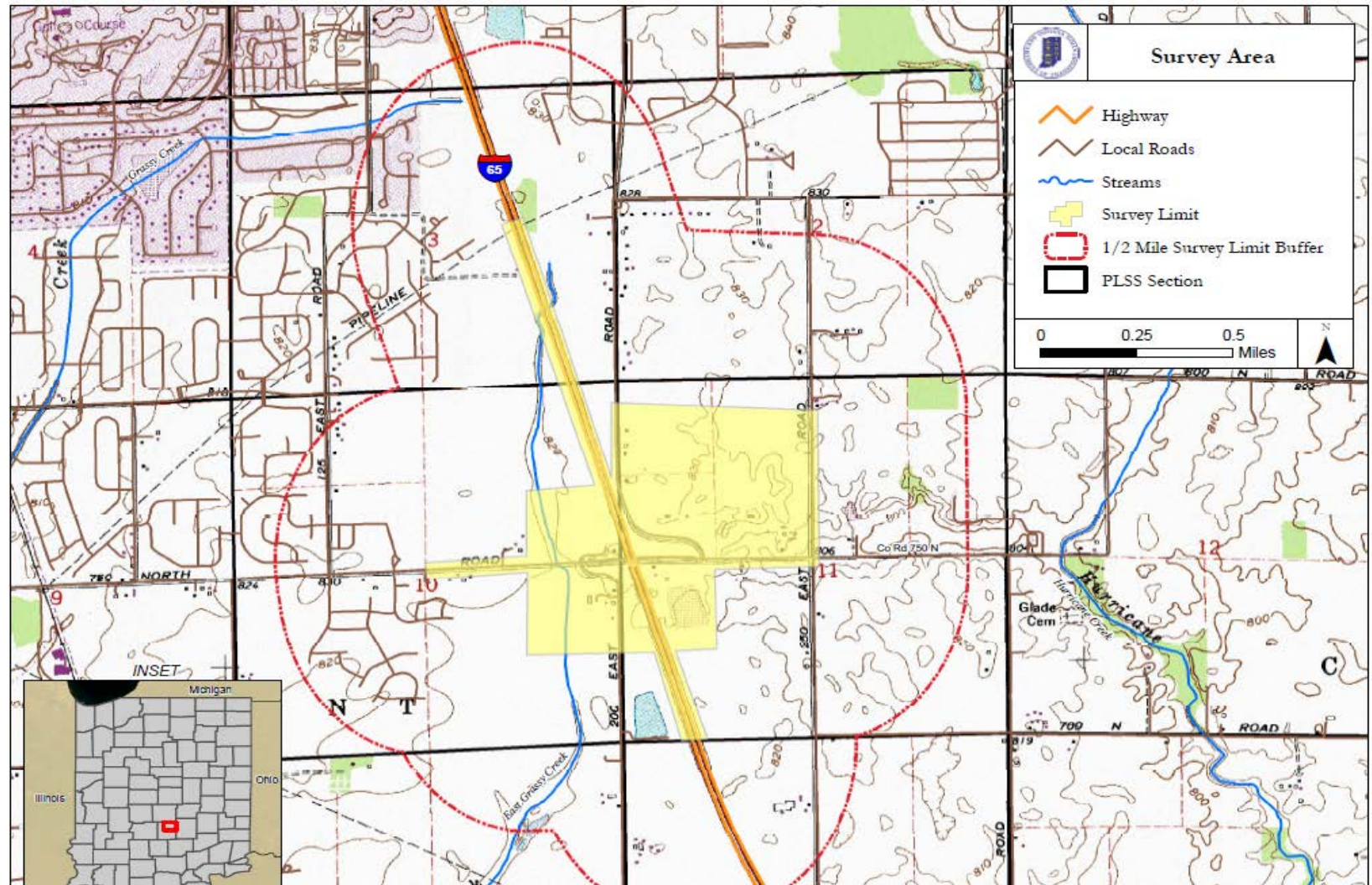


Preparing the Graphics

- Five maps are required:
 - General Location, Infrastructure, Water Resources, Mining/Mineral Exploration, and Hazardous Materials Concerns
 - Basic map elements
 - Download data from IndianaMap – <http://www.indianamap.org/>
 - Indiana Geological Survey's (IGS) Petroleum Database Management System (PDMS) – http://igs.indiana.edu/arcims/pdmsims/pdmsFlash_new.cfm
 - Aerial photos – <http://www.indiana.edu/~gisdata/>



Preparing a Red Flag Investigation



Preparing a Red Flag Investigation

- Supplemental maps:
 - USGS topographic map –
<http://www.indiana.edu/~gisdata/>
 - Relevant County Interim Report pages
 - FEMA floodplain map –
<http://msc.fema.gov/webapp/wcs/stores/servlet/StoreCatalogDisplay?storeId=10001&catalogId=10001&langId=-1&userType=G>



Summary of Resources

- Aerial photos and USGS topographic maps –
<http://www.indiana.edu/~gisdata/>
- IndianaMap –
<http://www.indianamap.org/>
- IGS's Petroleum Database Management System (PDMS) –
http://igs.indiana.edu/arcims/pdmsims/pdmsFlash_new.cfm



Summary of Resources

- INDOT “Hazardous Materials Unit Operating Manual” and Red Flag Investigation Template – <http://www.in.gov/indot/2523.htm>
- FEMA Map Service – <http://msc.fema.gov/webapp/wcs/stores/servlet/StoreCatalogDisplay?storeId=10001&catalogId=10001&langId=-1&userType=G>
- Environmental Services Listserv – http://lists.in.gov/mailman/listinfo/environmental_services

