

1-1-2007

## Prolog WebSite

Purdue ECT Team

*Purdue University*, [ectinfo@ecn.purdue.edu](mailto:ectinfo@ecn.purdue.edu)

DOI: 10.5703/1288284315842

Follow this and additional works at: <http://docs.lib.purdue.edu/ectfs>



Part of the [Civil Engineering Commons](#), and the [Construction Engineering and Management Commons](#)

---

### Recommended Citation

ECT Team, Purdue, "Prolog WebSite" (2007). *ECT Fact Sheets*. Paper 133.  
<http://dx.doi.org/10.5703/1288284315842>

This document has been made available through Purdue e-Pubs, a service of the Purdue University Libraries. Please contact [epubs@purdue.edu](mailto:epubs@purdue.edu) for additional information.



## PROLOG WEBSITE

### THE NEED

It has become apparent that in today's market place all parties involved on a construction site need to work together to meet deadlines and specifications. Communicating and distributing the right information at the right time is extremely important in today's marketplace. What better way to do this then with the latest technology available to construction industry via the internet. Prolog WebSite, from Meridian Project Systems Inc., is a software package that allows contractors, architects, owners, engineers, and subcontractors working on a construction project to communicate faster and more efficiently, therefore creating a fast track project.

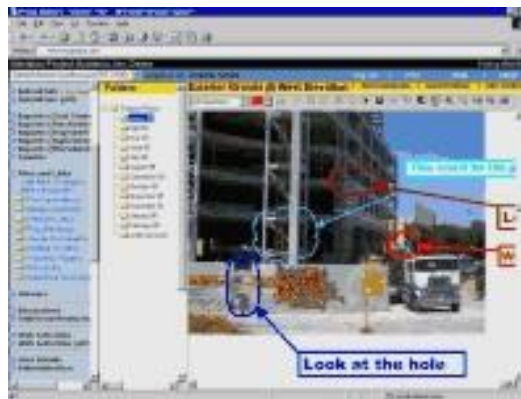


FIGURE 1 COMMUNICATE PROGRESS PHOTOS TO THE PROJECT TEAM



FIGURE 2 UPLOAD FILES TO THE SITE, WITH VARYING LEVELS OF SECURITY PER FILE, SUCH AS PROJECT SCHEDULES



FIGURE 3 BASSPRO SHOPS IN HOUSTON, TEXAS

## THE TECHNOLOGY

Prolog WebSite is an Internet-based project collaboration application that allows customers to create project-specific websites without having to design web pages. Prolog WebSite interfaces directly with Prolog Manager 5.0, another product from Meridian Project Systems Inc., and allows direct interaction between local users of Prolog Manager 5.0 and remote Internet browser users.

Prolog WebSite is an external facing application that enable manage external processes, thus allowing users to better service their clients, partners, and vendors. This eBusiness solution operates as the hub of information for the entire project team. With Prolog WebSite, the user can easily monitor the status of a project at any time from anywhere in the world using a standard Internet browser.

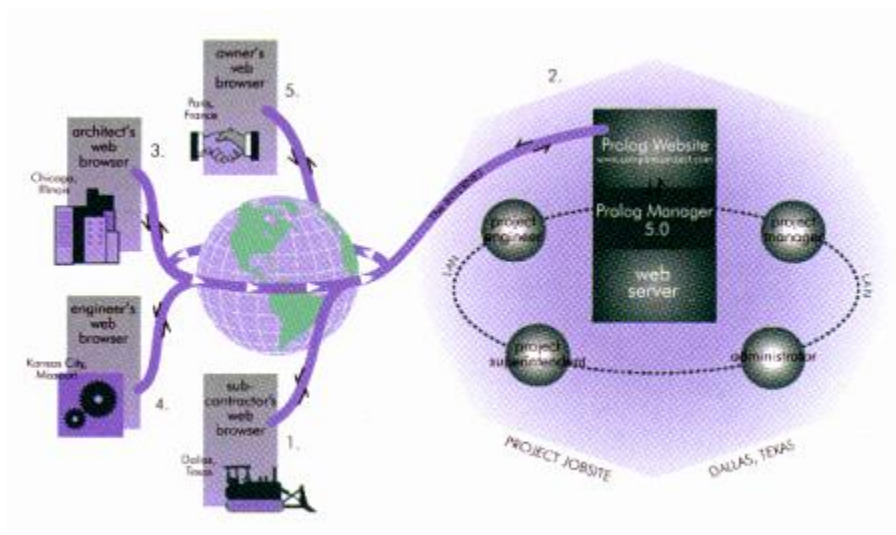


FIGURE 4 PROLOG WEBSITE



Prolog WebSite includes two important feature sets that are specifically geared for the design and construction phases of a project: document management and data management. The document management features provide a logical framework for managing a large number of files including CAD drawings, photos, etc. With Prolog WebSite, these files can be viewed, redlined, and annotated collaboratively. Additionally, a threaded comment system allows individuals involved in the design review process to track and discuss the details concerning the project.

The data management feature set allows users to manage workflow processes such as requests for information, submittals, and punch lists. With Prolog WebSite, users have an unsurpassed capability of reporting procurement, cost control, engineering and superintending information in a real-time environment.

Prolog WebSite allows the users take information on a project such as drawing logs, RFIs, Punch list items, submittals, and daily work journals and communicate it to other members of the construction process.

## **THE BENEFITS**

Some of the benefits of Prolog WebSite are as follows:

- Integration between project management and project collaboration application.
- "Real time" communication between team members.
- Reduced overhead from less compiling and distributing of current project information to team members.
- Central location for project information ensures everyone is "on the same page".
- Remote access for project information
- Standard systems fosters teamwork among project participants.

## **STATUS**

Prolog WebSite has been used by a large number of construction firms. Gilbane Construction implemented Prolog WebSite on its latest project, a \$12 million retail building for BassPro Shops in Houston, Texas. A pioneer of the design-build delivery method, The Haskell Company of Jacksonville, Florida continues to benefit from the Prolog WebSite as one of the technology that enable Haskell to create a central 'knowledge base' for its projects.



## **BARRIERS**

While in client side there is no much software requirements to run Prolog WebSite, Prolog WebSite server needs one or more Prolog Manager project database. It is meant that the users cannot use project management software and database other than Prolog Manager.

## **POINTS OF CONTACT**

**Elizabeth Dodson.** Meridian Project Systems, Inc.

Tell: (800) 850-2660, Email: [edodson@mps.com](mailto:edodson@mps.com)

## **REFERENCES**

1. Meridian Project Systems, ePower for Projects, <http://www.mps.com>

## **REVIEWERS**

Peer reviewed as an emerging construction technology

## **DISCLAIMER**

Purdue University does not endorse this technology or represents that the information presented can be relied upon without further investigation.

## **PUBLISHER**

Emerging Construction Technologies, Division of Construction Engineering and Management, Purdue University, West Lafayette, Indiana