

1-1-2007

MMFX Microcomposite Steel (MMFX2)

Purdue ECT Team
Purdue University, ectinfo@ecn.purdue.edu

DOI: 10.5703/1288284315798

Follow this and additional works at: <https://docs.lib.purdue.edu/ectfs>



Part of the [Civil Engineering Commons](#), and the [Construction Engineering and Management Commons](#)

Recommended Citation

ECT Team, Purdue, "MMFX Microcomposite Steel (MMFX2)" (2007). *ECT Fact Sheets*. Paper 89.
<http://dx.doi.org/10.5703/1288284315798>

This document has been made available through Purdue e-Pubs, a service of the Purdue University Libraries.
Please contact epubs@purdue.edu for additional information.



MMFX MICROCOMPOSITE STEEL (MMFX2)

THE NEED

One of the major problems facing the construction industry today is the effect of corrosion on steel, and the inherent structural weaknesses it causes in highways, bridges and buildings. The need for corrosion-resistant steel is illustrated by the billions of dollars required annually to reconstruct or repair structures whose design life has been either shortened or eliminated as a result of corrosion, or through loss of aesthetic value or functional obsolescence. Irrespective of the replacement costs of steel products (i.e. reinforced concrete, structural steel members, ship plate, etc.), personal injury and deaths have occurred through corrosion-induced structural failures.



FIGURE 1 MMFX STEEL REBAR

THE TECHNOLOGY

MMFX 2 rebar was developed through the use of nanotechnology by Dr. Gareth Thomas, graduate school professor of materials science at Univ. of California, Berkeley. It is highly corrosion resistant and equal, or in many cases, far superior to existing conventional carbon steel in its properties of strength, energy absorption, toughness, brittleness, ductility, and formability. In addition, MMFX steels is also economical to produce and install. MMFX steel achieves its superior properties of corrosion resistance as a result of the patented and proprietary steel microstructure that is formed during production. Its proprietary material composition and production processes minimize



the formation of microgalvanic cells, a significant contributor to the initiation and acceleration of corrosion activity.

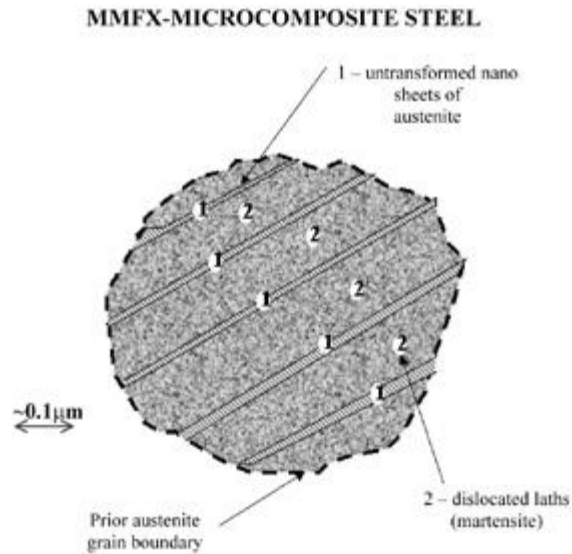


FIGURE A - MMFX – MICROSTRUCTURE

100% Packet Martensite - the packet is the microcomposite nano structure of dislocated martensite laths sandwiching thin sheets of untransformed austenite. In each prior austenite grain there are a maximum of 4 different packet orientations. Usually only one occurs when the grain size is small.

A Microcomposite (100% Packet Martensite) Steel,
To Eliminate Formation of Microstructural Galvanic Cells

FIGURE 2 MMFX-MICROCOMPOSITE STEEL

MMFX Steel's proprietary chemical composition and production process control the steel's martensitic microcomposite microstructure as shown in Figures A and B. MMFX's designed microstructure consists of untransformed nano sheets of austenite between laths of dislocated martensite, resulting in a virtually carbide free steel. Without the creation of continuous paths of carbides, microgalvanic cell formation is minimized during MMFX's production. Reduction of microgalvanic cell formation in MMFX steels are demonstrated by viewing their microstructures. Material microstructural properties are characterized utilizing transmission electron microscopy (TEM) techniques as illustrated in Figure B and are observed through use of electron microscopes. Hence, the control of MMFX steel's morphology (form and structure) of its microstructure has resulted in its significantly superior material properties. MMFX's microstructure not only provides the primary mechanism for its high corrosion resistance but also contributes to its superior mechanical properties of high strength with ductility, high fatigue resistance, and low temperature brittle fracture resistance. These material properties lead to longer service life in corrosive environments and lower construction costs. MMFX's superior strength provides an opportunity to save construction costs and materials along with simplifying placement of concrete, as a result of greater bar

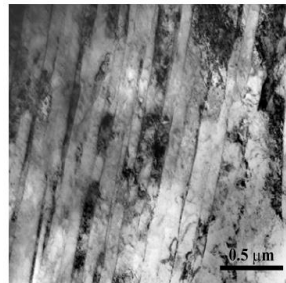


spacing, in heavily reinforced concrete structures. In addition, MMFX's superior corrosion resistance offers the potential opportunity to reduce concrete cover in certain structures needed as a result of the corrosive environments in which they are constructed.

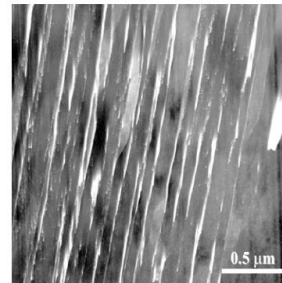
MMFX STEEL – MICROSTRUCTURE

Transmission Electron Microscopy (TEM)

Microstructure of Nano Sheets of Austenite In Carbide Free Lath Martensite



Bright Field image (BF)



Dark Field image (DF)

**FIGURE B – MMFX – TEM PACKET LATH MARTENSITE
MICROGRAPH**

FIGURE 3 MMFX STEEL – MICROSTRUCTURE

Field installation can further be simplified as MMFX's monolithic composition means that: 1. Field handling will not damage MMFX as can occur to coated products requiring field touch up of field damaged coatings, 2. Standard field rebar fabrication procedures are possible with MMFX vs. special requirements for offsite cutting and bending of coated products and special requirements to place protective end caps for clad products, and 3. No special field erection safety hazards exist for MMFX, as can occur on slick epoxy coated surfaces. All of these product qualities add up to potential significant costs savings through the use of MMFX and are seen both during installation and throughout the life of the project.

THE BENEFITS

- Highly corrosion resistant without use of coating technologies resulting in extended service life of rebar in corrosive environments.
- High design yield strength (100ksi) - reducing rebar quantities & simplifying field installation, which can result in reduced construction costs associated with concrete structure.
- Standard field fabrication techniques applicable.

STATUS

Microcomposite Steel's material and structural properties have been tested and analyzed at various public and private laboratories and institutions to provide structural, mechanical and corrosion resistance data



to certify MMFX for use by public agencies, private corporations and other interested parties. These institutions include: TEES (Texas Engineering Experimental Station) Texas A&M University, HITEC (Highway Innovative Technology Evaluation Center) and various universities. ([Click here for the test results](#))

MMFX Rebar Project Applications:

- Iowa Bridge Deck - MMFX rebar was incorporated into new bridge deck reinforcement for an Iowa DOT project located in GundyCounty Iowa.
- Oklahoma Bridge Girders - MMFX rebar is used as stirrups in precast bridge girders for an Oklahoma DOT project
- Florida Residence Slab - MMFX rebar was placed as reinforcement in a residential house slab in a highly corrosive coastal environment

MMFX was granted ASCE's CERF/IEEC 2002 Charles Pankow Award for Innovation.

BARRIERS

Various market entry barriers exist to new and innovative products, as these new products many times are not covered by existing material standards or are not included in the existing building codes. In order to overcome these market entry barriers MMFX Technologies is moving ahead in following areas of material specification and codification required for product certification: ASTM material specification, ACI product appraisal and material submission to the ACI 318 committee for inclusion in future design codes, and AASHTO (American Association of State Highway and Transportation Officials) standard material specification. ([Click here for the status of material standards and codification](#))

POINTS OF CONTACT

Art Lupia, MMFX Technologies

Tel: (866) 466-7878 Fax: (949) 474-1130

David Miller, MMFX Technologies

Tel: (866) 466-7878 Fax: (949) 474-1130, Email: David.Miller@MMFXSteel.com

REFERENCES

1. MMFX Steel Corp. Web site: <http://www.mmfsteel.com>
2. MMFX Steel Product Bulletin (Sep. 2001)
3. Bridge design & engineering magazine Web site <http://www.bridgeweb.com/>
4. IBRC FY2002 Awards announcement <http://ibrc.fhwa.dot.gov/Know/02awards.htm>
5. Charles Pankow Award for Innovation <http://www.cerf.org/about/awards/pankow.htm>



REVIEWERS

Peer reviewed as an emerging construction technology

DISCLAIMER

Purdue University does not endorse this technology or represents that the information presented can be relied upon without further investigation.

PUBLISHER

Emerging Construction Technologies, Division of Construction Engineering and Management, Purdue University, West Lafayette, Indiana