

## Archiving research data

PROJECT	Experiment	Trial
Title	Title	Title
Short title	Type of test	Trial name
Description	Description	Description
Start and end dates	Start and end dates	Start and end dates
Principal investigator(s)	Testing facilities	Trial objective
Team members	Equipment	<b>DOCUMENTATION</b>
Sponsor + award number	Specimen	Documentation
Organizations	Organizations	Analysis
Testing facilities	Material properties	
Keywords/Tags	Keywords/Tags	
<b>DOCUMENTATION</b>	<b>DOCUMENTATION</b>	
Executive summary	Drawings	
Project photographs	Sensor metadata	
Final report	Experiment report	
Manuals, interim reports, lab notes, interim papers, drafts of articles, presentations	Additional material, lab notes, interim papers, drafts of articles, presentations	
Analysis	Analysis	

Repetition
Title
Repetition name
Description
Start and end dates
<b>DOCUMENTATION</b>
Documentation
Analysis

Data
Unprocessed data
Converted data
Corrected data
Derived data
Photos
Videos

Legend
Required
Required if Applicable
Optional

## Documenting sensor measurements

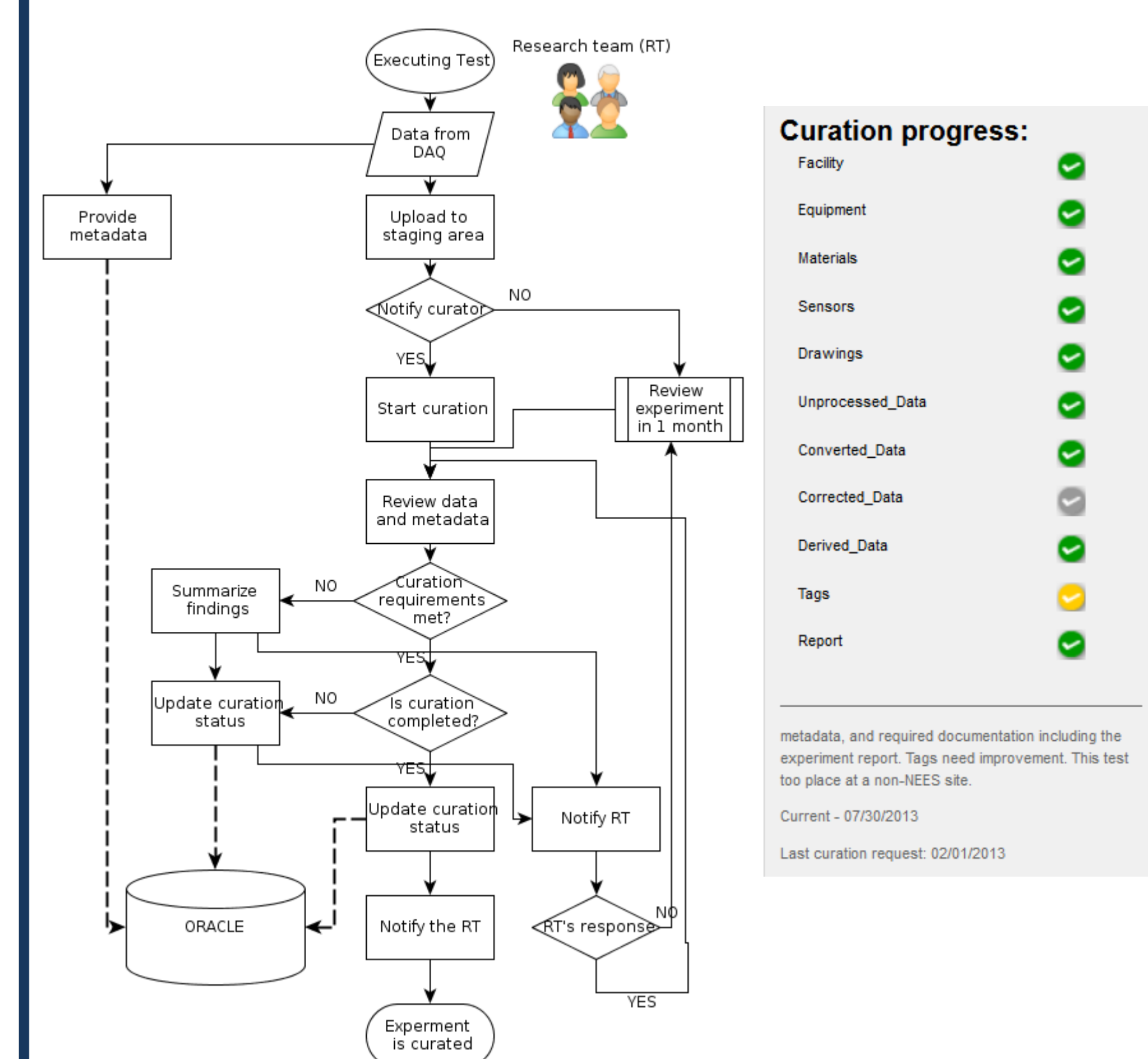
Required values for sensor metadata template:  
 Sensor Label                      DA Channel Number  
 Channel Name                      **Calibration Constant**  
 Sensor Type                        **Position (X,Y,Z) -**  
 Position Units  
 Coordinate Space – must be **Global Coordinate Space**

Sensor Label	Sensor Type	Comment	Position X	Position Y	Position Z	Position Unit	Orientation I	Orientation J	Orientation K	Coordinate Space	Serial Num	Sensor Mfg	DA Chann	Channel N	Calibration Value
WF2NX	Accelerometer	UniAxial, Appendix: W4105Sens	1180	732	0	in	1	0	0	Global Coordinate Space NA	in		1	7-34	1
WF2NY	Accelerometer	TriAxial, Root/RT comertSensor d	364.75	1113	5	in	0	1	0	Global Coordinate Space NA	in		1	7-39	1
WF2NZ	Accelerometer	TriAxial, Root/RT comertSensor d	720.75	-15	5	in	0	1	0	Global Coordinate Space NA	in		1	7-35	1
WF3WX	Accelerometer	TriAxial, Root/RT comertSensor d	1855.25	-15	5	in	1	0	0	Global Coordinate Space NA	in		1	4-7-19	1
WF3WY	Accelerometer		277	131	0	in	0	1	0	Global Coordinate Space NA	in		1	5-7-20	1
WF3WZ	Accelerometer		277	131	0	in	0	0	1	Global Coordinate Space NA	in		1	6-7-15	1
WF4NX	Accelerometer		10	245	150	in	1	0	0	Global Coordinate Space NA	in		1	7-7-27	1
WF4NY	Accelerometer		10	245	150	in	0	1	0	Global Coordinate Space NA	in		1	8-7-31	1
WF4NZ	Accelerometer		10	245	150	in	0	0	1	Global Coordinate Space NA	in		1	9-7-26	1
WF7NX	Accelerometer		277	245	0	in	1	0	0	Global Coordinate Space NA	in		1	10-7-17	1
WF7NY	Accelerometer		277	245	0	in	0	1	0	Global Coordinate Space NA	in		1	11-7-18	1
WF7NZ	Accelerometer		277	245	0	in	0	0	1	Global Coordinate Space NA	in		1	12-7-16	1

Only images – no PDF  
 Drawing types:  
 ■ Specimen  
 ■ Sensor layout (annotated sensors)  
 ■ Setup

## Curation process



**BENEFITS OF DATA MANAGEMENT**

**Better chances to find what you are looking for**

- Predictable location
- Meaningful structure

**More efficient work with data**

**Easier sharing of your data and transfer of knowledge**

Safe location of files  
 Less stress when finishing a project

**PURPOSE OF CURATION:**

**Long-Term Access**

**Discovery**

- Metadata

**Reuse**

- Location
- Formats
- Rights

**Preservation**

- Metadata
- Permissions
- Fixity
- File Integrity
- File Identification

